

MELK Polyclonal Antibody

Description

Product type	Primary Antibody
Code	BT-AP05364
Host	Rabbit
Isotype	IgG
Size	20ul, 50ul, 100ul
Immunogen	The antiserum was produced against synthesized peptide derived from human MELK. AA range:431-480
Mol wt	74642
Species reactivity	Human
Clonality	Polyclonal
Recommended application	WB, IHC-p, IF, ELISA
Concentration	1 mg/ml
Full name	MELK Antibody
Synonyms	MELK; KIAA0175; Maternal embryonic leucine zipper kinase; hMELK; Protein kinase Eg3; pEg3 kinase; Protein kinase PK38; hPK38; Tyrosine-protein kinase MELK

This product is for research use only, not for use in human, therapeutic or diagnostic procedure.

Background

MELK (Maternal Embryonic Leucine Zipper Kinase) is a Protein Coding gene. Among its related pathways are Neuroscience. GO annotations related to this gene include calcium ion binding and protein kinase activity. An important paralog of this gene is SNRK.

Recommended Dilution

WB: 1: 500 - 1: 2000

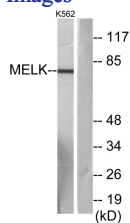
IHC: 1: 100 - 1: 300

IF: 1: 200 - 1: 1000

ELISA: 1: 10000

Not yet tested in other applications.

Images



Western blot analysis of lysates from K562 cells, using MELK Antibody. The lane on the right is blocked with the synthesized peptide.

Storage

-20°C for one year