

UBE2B Rabbit Polyclonal Antibody

Description

Product type	Primary Antibody
Code	BT-AP05368
Host	Rabbit
Isotype	IgG
Size	20ul, 50ul, 100ul
Immunogen	Synthesized peptide derived from human UBE2B
Mol wt	16720
Species reactivity	Human, Mouse, Rat
Clonality	Polyclonal
Recommended application	WB
Concentration	1 mg/ml
Full name	UBE2B
Synonyms	UBE2B

This product is for research use only, not for use in human, therapeutic or diagnostic procedure.

Background

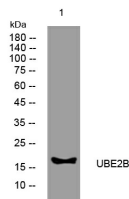
The modification of proteins with ubiquitin is an important cellular mechanism for targeting abnormal or short-lived proteins for degradation. Ubiquitination involves at least three classes of enzymes: ubiquitin-activating enzymes| or E1s| ubiquitin-conjugating enzymes| or E2s| and ubiquitin-protein ligases| or E3s. This gene encodes a member of the E2 ubiquitin-conjugating enzyme family. This enzyme is required for post-replicative DNA damage repair. Its protein sequence is 100% identical to the mouse| rat| and rabbit homologs| which indicates that this enzyme is highly conserved in eukaryotic evolution.

Recommended Dilution

WB: 1: 500 - 1: 2000

Not yet tested in other applications.

Images



Western blot analysis of lysates from A549 cells, primary antibody was diluted at 1:1000, 4°C overnight

Storage

-20°C for 1 year