

UBP18 Rabbit Polyclonal Antibody

Description

Product type	Primary Antibody
Code	BT-AP05373
Host	Rabbit
Isotype	IgG
Size	20ul, 50ul, 100ul
Immunogen	Synthesized peptide derived from human UBP18
Mol wt	40920
Species reactivity	Human, Mouse
Clonality	Polyclonal
Recommended application	WB
Concentration	1 mg/ml
Full name	UBP18
Synonyms	UBP18

This product is for research use only, not for use in human, therapeutic or diagnostic procedure.

Background

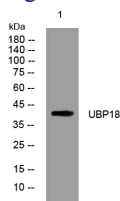
The protein encoded by this gene belongs to the ubiquitin-specific proteases (UBP) family of enzymes that cleave ubiquitin from ubiquitinated protein substrates. It is highly expressed in liver and thymus| and is localized to the nucleus. This protein efficiently cleaves only ISG15 (a ubiquitin-like protein) fusions| and deletion of this gene in mice results in a massive increase of ISG15 conjugates in tissues| indicating that this protein is a major ISG15-specific protease. Mice lacking this gene are also hypersensitive to interferon| suggesting a function of this protein in downregulating interferon responses| independent of its isopeptidase activity towards ISG15.

Recommended Dilution

WB: 1: 500 - 1: 2000

Not yet tested in other applications.

Images



Western blot analysis of lysates from THP-1 cells, primary antibody was diluted at 1:1000, 4°C overnight

Storage

-20°C for 1 year