

Met Polyclonal Antibody

Description

Product type	Primary Antibody
Code	BT-AP05377
Host	Rabbit
Isotype	IgG
Size	20ul, 50ul, 100ul
Immunogen	The antiserum was produced against synthesized peptide derived from human MET. AA range:976-1025
Mol wt	155527
Species reactivity	Human, Mouse, Rat
Clonality	Polyclonal
Recommended application	WB, IF, ELISA
Concentration	1 mg/ml
Full name	Met Antibody
Synonyms	MET; Hepatocyte growth factor receptor; HGF receptor; HGF/SF receptor; Proto-oncogene c-Met; Scatter factor receptor; SF receptor; Tyrosine-protein kinase Met

This product is for research use only, not for use in human, therapeutic or diagnostic procedure.

Background

MET encodes a member of the receptor tyrosine kinase family of proteins and the product of the proto-oncogene MET. Hepatocyte growth factor receptor is proteolytically processed to generate alpha and beta subunits that are linked via disulfide bonds to form the mature receptor. Further processing of the beta subunit results in the formation of the M10 peptide, which has been shown to reduce lung fibrosis. Binding of its ligand, hepatocyte growth factor, induces dimerization and activation of the receptor, which plays a role in cellular survival, embryogenesis, and cellular migration and invasion. Mutations in this gene are associated with papillary renal cell carcinoma, hepatocellular carcinoma, and various head and neck cancers. Amplification and overexpression of this gene are also associated with multiple human cancers.

Recommended Dilution

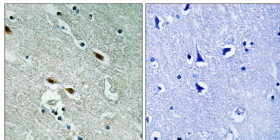
WB: 1: 500 - 1: 2000

IF: 1: 200 - 1: 1000

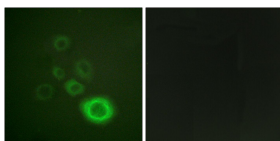
ELISA: 1: 5000

Not yet tested in other applications.

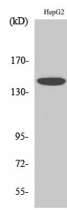
Images



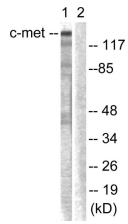
Immunohistochemistry analysis of paraffin-embedded human brain, using c-Met Antibody. The picture on the right is blocked with the c-Met peptide.



Immunofluorescence analysis of A549 cells, using c-Met Antibody. The picture on the right is blocked with the synthesized peptide.



Western Blot analysis of various cells using Met Polyclonal Antibody diluted at 1:1000



Western blot analysis of lysates from HepG2 cells, using c-Met Antibody. The lane on the right is blocked with the synthesized peptide.

Storage

-20°C for one year

501 Changsheng S Rd, Nanhu Dist, Jiaxing, Zhejiang, China

Tel: 86 21 31007137 | E-mail: save@bt-laboratory.com | www.bt-laboratory.com