

Mfn2 Polyclonal Antibody

Description

Product type	Primary Antibody
Code	BT-AP05382
Host	Rabbit
Isotype	IgG
Size	20ul, 50ul, 100ul
Immunogen	The antiserum was produced against synthesized peptide derived from human Mfn2. AA range:354-403
Mol wt	86402
Species reactivity	Human, Mouse, Rat
Clonality	Polyclonal
Recommended application	WB, IHC-p, ELISA
Concentration	1 mg/ml
Full name	Mfn2 Antibody
Synonyms	MFN2; CPRP1; KIAA0214; Mitofusin-2; Transmembrane GTPase MFN2

This product is for research use only, not for use in human, therapeutic or diagnostic procedure.

Background

MFN2 encodes a mitochondrial membrane protein that participates in mitochondrial fusion and contributes to the maintenance and operation of the mitochondrial network. Mitofusin-2 is involved in the regulation of vascular smooth muscle cell proliferation, and it may play a role in the pathophysiology of obesity. Mutations in this gene cause Charcot-Marie-Tooth disease type 2A2, and hereditary motor and sensory neuropathy VI, which are both disorders of the peripheral nervous system. Defects in this gene have also been associated with early-onset stroke. Two transcript variants encoding the same protein have been identified.

Recommended Dilution

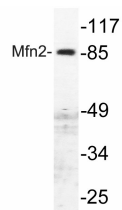
WB: 1: 500 - 1: 2000

IHC: 1: 100 - 1: 300

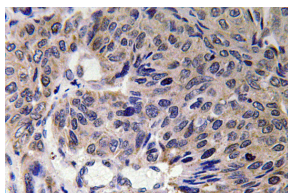
ELISA: 1: 40000

Not yet tested in other applications.

Images



Western blot analysis of lysate from HUVEC cells, using Mfn2 antibody.



Immunohistochemistry analysis of Mfn2 antibody in paraffin-embedded human lung carcinoma tissue.



Western Blot analysis of various cells using Mfn2 Polyclonal Antibody diluted at 1:1000

Storage

-20°C for one year

501 Changsheng S Rd, Nanhu Dist, Jiaxing, Zhejiang, China

Tel: 86 21 31007137 | E-mail: save@bt-laboratory.com | www.bt-laboratory.com