

mGluR-4 Polyclonal Antibody

Description

Product type	Primary Antibody
Code	BT-AP05389
Host	Rabbit
Isotype	IgG
Size	20ul, 50ul, 100ul
Immunogen	The antiserum was produced against synthesized peptide derived from human mGluR4. AA range:851-900
Mol wt	101868
Species reactivity	Human, Mouse, Rat
Clonality	Polyclonal
Recommended application	WB, IHC-p, ELISA
Concentration	1 mg/ml
Full name	mGluR-4 Antibody
Synonyms	GRM4; GPRC1D; MGLUR4; Metabotropic glutamate receptor 4; mGluR4

This product is for research use only, not for use in human, therapeutic or diagnostic procedure.

Background

L-glutamate is the major excitatory neurotransmitter in the central nervous system and activates both ionotropic and metabotropic glutamate receptors. Glutamatergic neurotransmission is involved in most aspects of normal brain function and can be perturbed in many neuropathologic conditions. The metabotropic glutamate receptors are a family of G protein-coupled receptors, that have been divided into 3 groups on the basis of sequence homology, putative signal transduction mechanisms, and pharmacologic properties. Group I includes GRM1 and GRM5 and these receptors have been shown to activate phospholipase C. Group II includes GRM2 and GRM3 while Group III includes GRM4, GRM6, GRM7 and GRM8. Group II and III receptors are linked to the inhibition of the cyclic AMP cascade but differ in their agonist selectivities. Several transcript variants encoding different isoforms have been found for GRM4.

Recommended Dilution

WB: 1: 500 - 1: 2000

IHC: 1: 100 - 1: 300

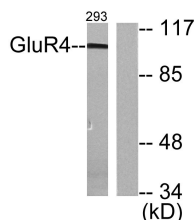
ELISA: 1: 10000

Not yet tested in other applications.

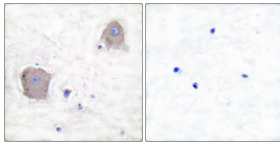
Images



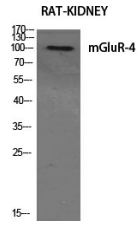
Western Blot analysis of 293 cells using mGluR-4 Polyclonal Antibody diluted at 1:500



Western blot analysis of lysates from 293 cells, treated with Forskolin 40nM 30', using mGluR4 Antibody. The lane on the right is blocked with the synthesized peptide.



Immunohistochemistry analysis of paraffin-embedded human brain tissue, using mGluR4 Antibody.
The picture on the right is blocked with the synthesized peptide.



Western Blot analysis of various cells using mGluR-4 Polyclonal Antibody diluted at 1:500

Storage

-20°C for one year

501 Changsheng S Rd, Nanhu Dist, Jiaxing, Zhejiang, China

Tel: 86 21 31007137 | E-mail: save@bt-laboratory.com | www.bt-laboratory.com