

mGluR5 Polyclonal Antibody

Description

Product type	Primary Antibody
Code	BT-AP05390
Host	Rabbit
Isotype	IgG
Size	20ul, 50ul, 100ul
Immunogen	The antiserum was produced against synthesized peptide derived from human GRM5. AA range:21-70
Mol wt	132469
Species reactivity	Human, Mouse, Rat
Clonality	Polyclonal
Recommended application	WB, IHC-p, IF, ELISA
Concentration	1 mg/ml
Full name	mGluR5 Antibody
Synonyms	GRM5; GPRC1E; MGLUR5; Metabotropic glutamate receptor 5; mGluR5

This product is for research use only, not for use in human, therapeutic or diagnostic procedure.

Background

GRM5 encodes a member of the G-protein coupled receptor 3 protein family. Metabotropic glutamate receptor 5 is a metabotropic glutamate receptor, whose signaling activates a phosphatidylinositol-calcium second messenger system. Metabotropic glutamate receptor 5 may be involved in the regulation of neural network activity and synaptic plasticity. Glutamatergic neurotransmission is involved in most aspects of normal brain function and can be perturbed in many neuropathologic conditions. A pseudogene of this gene has been defined on chromosome 11. Alternative splicing results in multiple transcript variants.

Recommended Dilution

WB: 1: 500 - 1: 2000

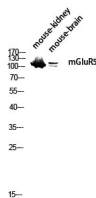
IHC: 1: 100 - 1: 300

IF: 1: 200 - 1: 1000

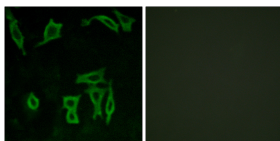
ELISA: 1: 10000

Not yet tested in other applications.

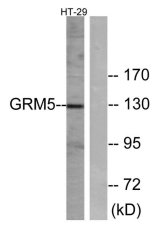
Images



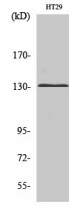
Western blot analysis of mouse-kidney mouse-brain lysis using mGluR5 antibody. Antibody was diluted at 1:1000



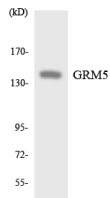
Immunofluorescence analysis of LOVO cells, using GRM5 Antibody. The picture on the right is blocked with the synthesized peptide.



Western blot analysis of lysates from HT-29 cells, using GRM5 Antibody. The lane on the right is blocked with the synthesized peptide.



Western Blot analysis of various cells using mGluR5 Polyclonal Antibody diluted at 1:1000



Western blot analysis of the lysates from HeLa cells using GRM5 antibody.

Storage

-20°C for one year

501 Changsheng S Rd, Nanhu Dist, Jiaxing, Zhejiang, China

Tel: 86 21 31007137 | E-mail: save@bt-laboratory.com | www.bt-laboratory.com