

## mGluR-6 Polyclonal Antibody

### Description

|                                |  |
|--------------------------------|--|
| <b>Product type</b>            | Primary Antibody   |
| <b>Code</b>                    | BT-AP05391   |
| <b>Host</b>                    | Rabbit   |
| <b>Isotype</b>                 | IgG  |
| <b>Size</b>                    | 20ul, 50ul, 100ul  |
| <b>Immunogen</b>               | The antiserum was produced against synthesized peptide derived from human mGluR6. AA range:828-877 |
| <b>Mol wt</b>                  | 95437  |
| <b>Species reactivity</b>      | Human  |
| <b>Clonality</b>               | Polyclonal   |
| <b>Recommended application</b> | WB, IHC-p, ELISA   |
| <b>Concentration</b>           | 1 mg/ml  |
| <b>Full name</b>               | mGluR-6 Antibody   |
| <b>Synonyms</b>                | GRM6; GPRC1F; MGLUR6; Metabotropic glutamate receptor 6; mGluR6                                    |

**This product is for research use only, not for use in human, therapeutic or diagnostic procedure.**

### Background

L-glutamate is the major excitatory neurotransmitter in the central nervous system and activates both ionotropic and metabotropic glutamate receptors. Glutamatergic neurotransmission is involved in most aspects of normal brain function and can be perturbed in many neuropathologic conditions. The metabotropic glutamate receptors are a family of G protein-coupled receptors, that have been divided into 3 groups on the basis of sequence homology, putative signal transduction mechanisms, and pharmacologic properties. Group I includes GRM1 and GRM5 and these receptors have been shown to activate phospholipase C. Group II includes GRM2 and GRM3 while Group III includes GRM4, GRM6, GRM7 and GRM8. Group II and III receptors are linked to the inhibition of the cyclic AMP cascade but differ in their agonist selectivities.

### Recommended Dilution

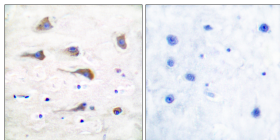
WB: 1: 500 - 1: 2000

IHC: 1: 100 - 1: 300

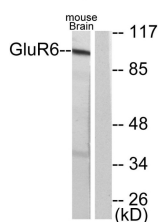
ELISA: 1: 20000

Not yet tested in other applications.

### Images



Immunohistochemistry analysis of paraffin-embedded human brain tissue, using mGluR6 Antibody. The picture on the right is blocked with the synthesized peptide.



Western blot analysis of lysates from mouse brain, using mGluR6 Antibody. The lane on the right is blocked with the synthesized peptide.

## Storage

-20°C for one year

501 Changsheng S Rd, Nanhu Dist, Jiaxing, Zhejiang, China

Tel: 86 21 31007137 | E-mail: [save@bt-laboratory.com](mailto:save@bt-laboratory.com) | [www.bt-laboratory.com](http://www.bt-laboratory.com)