

## MGMT Polyclonal Antibody

### Description

<b>Product type</b>	Primary Antibody
<b>Code</b>	BT-AP05395
<b>Host</b>	Rabbit
<b>Isotype</b>	IgG
<b>Size</b>	20ul, 50ul, 100ul
<b>Immunogen</b>	The antiserum was produced against synthesized peptide derived from human MGMT. AA range:1-50
<b>Mol wt</b>	21646
<b>Species reactivity</b>	Human, Rat
<b>Clonality</b>	Polyclonal
<b>Recommended application</b>	WB, IHC-p, ELISA
<b>Concentration</b>	1 mg/ml
<b>Full name</b>	MGMT Antibody
<b>Synonyms</b>	MGMT; Methylated-DNA--protein-cysteine methyltransferase; 6-O-methylguanine-DNA methyltransferase; MGMT; O-6-methylguanine-DNA-alkyltransferase

**This product is for research use only, not for use in human, therapeutic or diagnostic procedure.**

### Background

Alkylating agents are potent carcinogens that can result in cell death, mutation and cancer. Methylated-DNA--protein-cysteine methyltransferase encoded by MGMT is a DNA repair protein that is involved in cellular defense against mutagenesis and toxicity from alkylating agents. Methylated-DNA--protein-cysteine methyltransferase catalyzes transfer of methyl groups from O(6)-alkylguanine and other methylated moieties of the DNA to its own molecule, which repairs the toxic lesions. Methylation of the genes promoter has been associated with several cancer types, including colorectal cancer, lung cancer, lymphoma and glioblastoma.

### Recommended Dilution

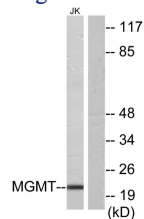
WB: 1: 500 - 1: 2000

IHC: 1: 100 - 1: 300

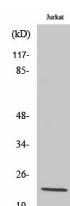
ELISA: 1: 5000

Not yet tested in other applications.

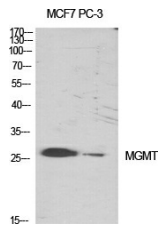
### Images



Western blot analysis of lysates from Jurkat cells, using MGMT Antibody. The lane on the right is blocked with the synthesized peptide.



Western Blot analysis of Jurkat cells using MGMT Polyclonal Antibody diluted at 1:1000 cells nucleus.



Western Blot analysis of various cells using MGMT Polyclonal Antibody diluted at 1:1000 cells nucleus.

### Storage

-20°C for one year

501 Changsheng S Rd, Nanhu Dist, Jiaxing, Zhejiang, China

Tel: 86 21 31007137 | E-mail: [save@bt-laboratory.com](mailto:save@bt-laboratory.com) | [www.bt-laboratory.com](http://www.bt-laboratory.com)