

Mi2-Beta Polyclonal Antibody

Description

Product type	Primary Antibody
Code	BT-AP05401
Host	Rabbit
Isotype	IgG
Size	20ul, 50ul, 100ul
Immunogen	The antiserum was produced against synthesized peptide derived from human CHD4. AA range:571-620
Mol wt	217991
Species reactivity	Human, Mouse
Clonality	Polyclonal
Recommended application	IHC-p, IF, ELISA
Concentration	1 mg/ml
Full name	Mi2-beta Antibody
Synonyms	CHD4; Chromodomain-helicase-DNA-binding protein 4; CHD-4; ATP-dependent helicase CHD4; Mi-2 autoantigen 218 kDa protein; Mi2-beta

This product is for research use only, not for use in human, therapeutic or diagnostic procedure.

Background

The product of CHD4 belongs to the SNF2/RAD54 helicase family. It represents the main component of the nucleosome remodeling and deacetylase complex and plays an important role in epigenetic transcriptional repression. Patients with dermatomyositis develop antibodies against this protein. Somatic mutations in this gene are associated with serous endometrial tumors. Alternative splicing results in multiple transcript variants encoding different isoforms.

Recommended Dilution

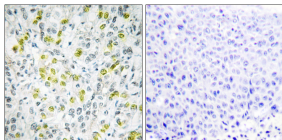
IHC: 1: 100 - 1: 300

IF: 1: 200 - 1: 1000

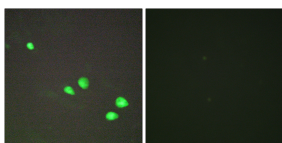
ELISA: 1: 20000

Not yet tested in other applications.

Images



Immunohistochemistry analysis of paraffin-embedded human liver carcinoma tissue, using CHD4 Antibody. The picture on the right is blocked with the synthesized peptide.



Immunofluorescence analysis of HepG2 cells, using CHD4 Antibody. The picture on the right is blocked with the synthesized peptide.

Storage

-20°C for one year