

Midline-1 Polyclonal Antibody

Description

Product type	Primary Antibody
Code	BT-AP05415
Host	Rabbit
Isotype	IgG
Size	20ul, 50ul, 100ul
Immunogen	The antiserum was produced against synthesized peptide derived from human TRI18. AA range:71-120
Mol wt	75251
Species reactivity	Human, Mouse, Rat
Clonality	Polyclonal
Recommended application	WB, IHC-p, IF, ELISA
Concentration	1 mg/ml
Full name	Midline-1 Antibody
Synonyms	MID1; FXY; RNF59; TRIM18; XPRF; Midline-1; Midin; Midline 1 RING finger protein; Putative transcription factor XPRF; RING finger protein 59; Tripartite motif-containing protein 18

This product is for research use only, not for use in human, therapeutic or diagnostic procedure.

Background

Midline-1 encoded by this MID1 is a member of the tripartite motif (TRIM) family, also known as the 'RING-B box-coiled coil' (RBCC) subgroup of RING finger proteins. The TRIM motif includes three zinc-binding domains, a RING, a B-box type 1 and a B-box type 2, and a coiled-coil region. This protein forms homodimers which associate with microtubules in the cytoplasm. Midline-1 is likely involved in the formation of multiprotein structures acting as anchor points to microtubules. Mutations in this gene have been associated with the X-linked form of Opitz syndrome, which is characterized by midline abnormalities such as cleft lip, laryngeal cleft, heart defects, hypospadias, and agenesis of the corpus callosum. This gene was also the first example of a gene subject to X inactivation in human while escaping it in mouse. Multiple different transcript variants are generated by alternate splicing; however, the full-length nature of some of the variants has not been determined.

Recommended Dilution

WB: 1: 500 - 1: 2000

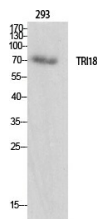
IHC: 1: 100 - 1: 300

IF: 1: 200 - 1: 1000

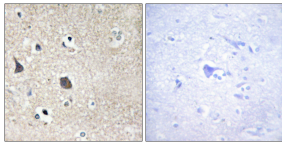
ELISA: 1: 40000

Not yet tested in other applications.

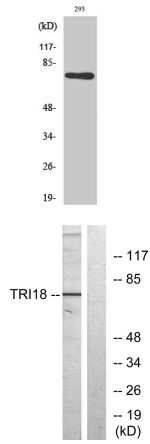
Images



Western Blot analysis of various cells using Midline-1 Polyclonal Antibody

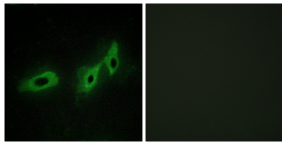


Immunohistochemistry analysis of paraffin-embedded human brain tissue, using TRI18 Antibody. The picture on the right is blocked with the synthesized peptide.



Western Blot analysis of 293 cells using Midline-1 Polyclonal Antibody

Western blot analysis of lysates from 293 cells, using TRI18 Antibody. The lane on the right is blocked with the synthesized peptide.



Immunofluorescence analysis of HeLa cells, using TRI18 Antibody. The picture on the right is blocked with the synthesized peptide.

Storage

-20°C for one year

501 Changsheng S Rd, Nanhu Dist, Jiaxing, Zhejiang, China

Tel: 86 21 31007137 | E-mail: save@bt-laboratory.com | www.bt-laboratory.com