

## Mindin Polyclonal Antibody

### Description

<b>Product type</b>	Primary Antibody
<b>Code</b>	BT-AP05421
<b>Host</b>	Rabbit
<b>Isotype</b>	IgG
<b>Size</b>	20ul, 50ul, 100ul
<b>Immunogen</b>	The antiserum was produced against synthesized peptide derived from human SPON2. AA range:71-120
<b>Mol wt</b>	35844
<b>Species reactivity</b>	Human, Mouse, Rat, Monkey
<b>Clonality</b>	Polyclonal
<b>Recommended application</b>	WB, ELISA
<b>Concentration</b>	1 mg/ml
<b>Full name</b>	Mindin Antibody
<b>Synonyms</b>	SPON2; DIL1; Spondin-2; Differentially expressed in cancerous and non-cancerous lung cells 1; DIL-1; Mindin

This product is for research use only, not for use in human, therapeutic or diagnostic procedure.

### Background

Mindin, also known as Spondin-2 and DIL-1 (Differentially expressed in cancerous and non-cancerous lung cells 1) belongs to the F-spondin family of secreted extracellular matrix proteins. Family members are characterized by two N-terminal F-spondin domains (FS1 and FS2), and a third C-terminal thrombospondin type I repeat (TSP-1). Secreted Mindin exists as a disulfide-linked dimer that also forms higher order oligomers. It functions as a pattern recognition receptor for microbes and an adhesion molecule for neurons. Mindin is secreted by neurons, macrophages and fibroblasts in a variety of tissues. Human Mindin shares 88% amino acid sequence homology with mouse and rat proteins.

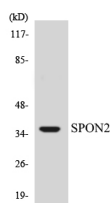
### Recommended Dilution

WB: 1: 500 - 1: 2000

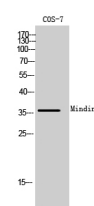
ELISA: 1: 40000

Not yet tested in other applications.

### Images



Western blot analysis of the lysates from HUVEC cells using SPON2 antibody.



Western Blot analysis of COS-7 cells using Mindin Polyclonal Antibody

## Storage

-20°C for one year

501 Changsheng S Rd, Nanhu Dist, Jiaxing, Zhejiang, China

Tel: 86 21 31007137 | E-mail: [save@bt-laboratory.com](mailto:save@bt-laboratory.com) | [www.bt-laboratory.com](http://www.bt-laboratory.com)