

MIP-1b Polyclonal Antibody

Description

Product type	Primary Antibody
Code	BT-AP05423
Host	Rabbit
Isotype	IgG
Size	20ul, 50ul, 100ul
Immunogen	The antiserum was produced against synthesized peptide derived from the Internal region of human CCL4L1/CCL4L2. AA range:31-80
Mol wt	10166
Species reactivity	Human
Clonality	Polyclonal
Recommended application	WB, ELISA
Concentration	1 mg/ml
Full name	MIP-1b Antibody
Synonyms	CCL4L1; CCL4L; LAG1; SCYA4L1; CCL4L2; CCL4L; SCYA4L2; C-C motif chemokine 4-like; Lymphocyte activation gene 1 protein; LAG-1; Macrophage inflammatory protein 1-beta; MIP-1-beta; Monocyte adherence-in

This product is for research use only, not for use in human, therapeutic or diagnostic procedure.

Background

CCL4, also known as macrophage inflammatory protein 1 beta (MIP-1 beta), is a 12 kDa beta chemokine that is secreted at sites of inflammation by activated leukocytes, lymphocytes, vascular endothelial cells, and pulmonary smooth muscle cells. CCL4 attracts a variety of immune cells to sites of microbial infection as well as to other pathologic inflammation such as allergic asthma and ischemic myocardium. A CCL4 deficiency in mice promotes the development of autoantibodies, possibly as a result of compromised regulatory T cell recruitment. CCL4 is secreted from activated monocytes as a heterodimer with CCL3/MIP-1 alpha. The first two N-terminal amino acids can be cleaved from human CCL4 by CD26/DPPIV. Both the full length and truncated forms exert biological activity through CCR5, and the truncated form additionally interacts with CCR1 and CCR2. In humans, the ability of CCL4 to bind CCR5 inhibits the cellular entry of M-tropic HIV-1 which utilizes CCR5 as a co-receptor. Both forms of CCL4 block HIV-1 infection of T cells by inducing the downregulation of CCR5. Mature mouse CCL4 shares 77% and 86% amino acid sequence identity with human and rat CCL4, respectively.

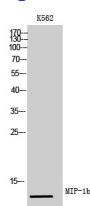
Recommended Dilution

WB: 1: 500 - 1: 2000

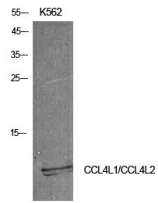
ELISA: 1: 10000

Not yet tested in other applications.

Images



Western Blot analysis of K562 cells using MIP-1b Polyclonal Antibody diluted at 1:500. Secondary antibody was diluted at 1:20000



Western Blot analysis of K562 cells using MIP-1b Polyclonal Antibody. Antibody was diluted at 1:500.
Secondary antibody was diluted at 1:20000

Storage

-20°C for one year

501 Changsheng S Rd, Nanhu Dist, Jiaxing, Zhejiang, China

Tel: 86 21 31007137 | E-mail: save@bt-laboratory.com | www.bt-laboratory.com