

MIP-1 Alpha Polyclonal Antibody

Description

Product type	Primary Antibody
Code	BT-AP05424
Host	Rabbit
Isotype	IgG
Size	20ul, 50ul, 100ul
Immunogen	The antiserum was produced against synthesized peptide derived from human MIP-1alpha. AA range:26-75
Mol wt	10085
Species reactivity	Human
Clonality	Polyclonal
Recommended application	IHC-p, ELISA
Concentration	1 mg/ml
Full name	MIP-1alpha Antibody
Synonyms	CCL3; G0S19-1; MIP1A; SCYA3; C-C motif chemokine 3; G0/G1 switch regulatory protein 19-1; Macrophage inflammatory protein 1-alpha; MIP-1-alpha; PAT 464.1; SIS-beta; Small-inducible cytokine A3; Tonsil

This product is for research use only, not for use in human, therapeutic or diagnostic procedure.

Background

CCL3 (C-C motif chemokine ligand 3) represents a small inducible cytokine. The encoded protein, also known as macrophage inflammatory protein 1 alpha, plays a role in inflammatory responses through binding to the receptors CCR1, CCR4 and CCR5. Polymorphisms at this locus (CCL3) may be associated with both resistance and susceptibility to infection by human immunodeficiency virus type 1.

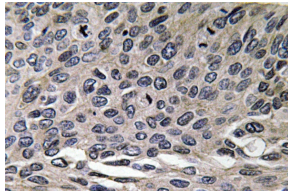
Recommended Dilution

IHC: 1: 100 - 1: 300

ELISA: 1: 20000

Not yet tested in other applications.

Images



Immunohistochemistry analysis of MIP-1 α antibody in paraffin-embedded human lung carcinoma tissue.

Storage

-20°C for one year