

MIP-1Beta Polyclonal Antibody

Description

Product type	Primary Antibody
Code	BT-AP05425
Host	Rabbit
Isotype	IgG
Size	20ul, 50ul, 100ul
Immunogen	The antiserum was produced against synthesized peptide derived from the Internal region of human CCL4. AA range:41-90
Mol wt	10212
Species reactivity	Human
Clonality	Polyclonal
Recommended application	WB, ELISA
Concentration	1 mg/ml
Full name	MIP-1beta Antibody
Synonyms	CCL4; LAG1; MIP1B; SCYA4; C-C motif chemokine 4; G-26 T-lymphocyte-secreted protein; HC21; Lymphocyte activation gene 1 protein; LAG-1; MIP-1-beta(1-69); Macrophage inflammatory protein 1-beta; MIP-1-b

This product is for research use only, not for use in human, therapeutic or diagnostic procedure.

Background

CCL4L1 is one of several cytokine genes that are clustered on the q-arm of chromosome 17. Cytokines are a family of secreted proteins that function in inflammatory and immunoregulatory processes. C-C motif chemokine 4 encoded by this family member is similar to the chemokine (C-C motif) ligand 4 product, which inhibits HIV entry by binding to the cellular receptor CCR5. The copy number of this gene varies among individuals, where most individuals have one to five copies. Alternative splicing of this gene results in multiple transcript variants.

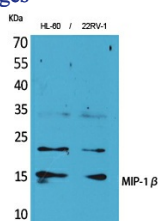
Recommended Dilution

WB: 1: 500 - 1: 2000

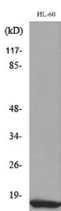
ELISA: 1: 20000

Not yet tested in other applications.

Images



Western Blot analysis of HL-60, 22RV-1 cells using MIP-1 β Polyclonal Antibody. Secondary antibody was diluted at 1:20000



Western blot analysis of lysate from HL-60 cells, using CCL4 Antibody.

Storage

-20°C for one year

501 Changsheng S Rd, Nanhu Dist, Jiaxing, Zhejiang, China

Tel: 86 21 31007137 | E-mail: save@bt-laboratory.com | www.bt-laboratory.com