

## MIPP Polyclonal Antibody

### Description

<b>Product type</b>	Primary Antibody
<b>Code</b>	BT-AP05429
<b>Host</b>	Rabbit
<b>Isotype</b>	IgG
<b>Size</b>	20ul, 50ul, 100ul
<b>Immunogen</b>	The antiserum was produced against synthesized peptide derived from human MINPP1. AA range:328-377
<b>Mol wt</b>	55051
<b>Species reactivity</b>	Human, Mouse, Rat
<b>Clonality</b>	Polyclonal
<b>Recommended application</b>	WB, IHC-p, ELISA
<b>Concentration</b>	1 mg/ml
<b>Full name</b>	MIPP Antibody
<b>Synonyms</b>	MINPP1; MIPP; Multiple inositol polyphosphate phosphatase 1; 2; 3-bisphosphoglycerate 3-phosphatase; 2,3-BPG phosphatase; Inositol; 1,3,4,5)-tetrakisphosphate 3-phosphatase; Ins(1,3,4,5)P(4) 3-phospha

**This product is for research use only, not for use in human, therapeutic or diagnostic procedure.**

### Background

MINPP1 encodes multiple inositol polyphosphate phosphatase; an enzyme that removes 3-phosphate from inositol phosphate substrates. Multiple inositol polyphosphate phosphatase 1 is the only enzyme known to hydrolyze inositol pentakisphosphate and inositol hexakisphosphate. Multiple inositol polyphosphate phosphatase 1 also converts 2,3 bisphosphoglycerate (2,3-BPG) to 2-phosphoglycerate; an activity formerly thought to be exclusive to 2,3-BPG synthase/2-phosphatase (BPGM) in the Rapoport-Luebering shunt of the glycolytic pathway.

### Recommended Dilution

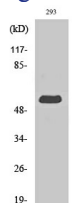
WB: 1: 500 - 1: 2000

IHC: 1: 100 - 1: 300

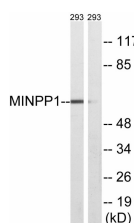
ELISA: 1: 10000

Not yet tested in other applications.

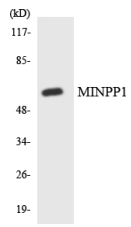
### Images



Western Blot analysis of various cells using MIPP Polyclonal Antibody



Western blot analysis of lysates from 293 cells, using MINPP1 Antibody. The lane on the right is blocked with the synthesized peptide.



Western blot analysis of the lysates from HepG2 cells using MINPP1 antibody.

### Storage

-20°C for one year

501 Changsheng S Rd, Nanhu Dist, Jiaxing, Zhejiang, China

Tel: 86 21 31007137 | E-mail: [save@bt-laboratory.com](mailto:save@bt-laboratory.com) | [www.bt-laboratory.com](http://www.bt-laboratory.com)