

MIP-T3 Polyclonal Antibody

Description

Product type	Primary Antibody
Code	BT-AP05430
Host	Rabbit
Isotype	IgG
Size	20ul, 50ul, 100ul
Immunogen	The antiserum was produced against synthesized peptide derived from human MIPT3. AA range:221-270
Mol wt	78632
Species reactivity	Human
Clonality	Polyclonal
Recommended application	IHC-p, IF, ELISA
Concentration	1 mg/ml
Full name	MIP-T3 Antibody
Synonyms	TRAF3IP1; MIPT3; TRAF3-interacting protein 1; Interleukin-13 receptor alpha 1-binding protein 1; Microtubule-interacting protein associated with TRAF3; MIP-T3

This product is for research use only, not for use in human, therapeutic or diagnostic procedure.

Background

Play an inhibitory role on IL13 signaling by binding to IL13RA1. Involved in suppression of IL13-induced STAT6 phosphorylation, transcriptional activity and DNA-binding. Recruits TRAF3 and DISC1 to the microtubules.

Recommended Dilution

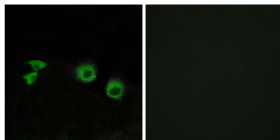
IHC: 1: 100 - 1: 300

IF: 1: 200 - 1: 1000

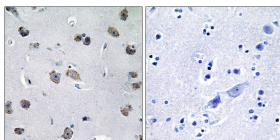
ELISA: 1: 10000

Not yet tested in other applications.

Images



Immunofluorescence analysis of MCF7 cells, using MIPT3 Antibody. The picture on the right is blocked with the synthesized peptide.



Immunohistochemistry analysis of paraffin-embedded human brain tissue, using MIPT3 Antibody. The picture on the right is blocked with the synthesized peptide.

Storage

-20°C for one year