

MK Polyclonal Antibody

Description

Product type	Primary Antibody
Code	BT-AP05435
Host	Rabbit
Isotype	IgG
Size	20ul, 50ul, 100ul
Immunogen	The antiserum was produced against synthesized peptide derived from human MK. AA range:94-143
Mol wt	15,585
Species reactivity	Human, Rat
Clonality	Polyclonal
Recommended application	WB, ELISA
Concentration	1 mg/ml
Full name	MK Antibody
Synonyms	MDK; MK1; NRG2; Midkine; MK; Amphiregulin-associated protein; ARAP; Midgestation and kidney protein; Neurite outgrowth-promoting factor 2; Neurite outgrowth-promoting protein

This product is for research use only, not for use in human, therapeutic or diagnostic procedure.

Background

MDK encodes a member of a small family of secreted growth factors that binds heparin and responds to retinoic acid. Midkine promotes cell growth, migration, and angiogenesis, in particular during tumorigenesis. MDK has been targeted as a therapeutic for a variety of different disorders. Alternatively spliced transcript variants encoding multiple isoforms have been observed.

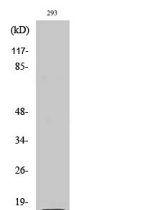
Recommended Dilution

WB: 1: 500 - 1: 2000

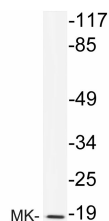
ELISA: 1: 40000

Not yet tested in other applications.

Images



Western Blot analysis of various cells using MK Polyclonal Antibody diluted at 1:2000



Western blot analysis of lysate from 293 cells, using MK antibody.

Storage

-20°C for one year

501 Changsheng S Rd, Nanhu Dist, Jiaxing, Zhejiang, China

Tel: 86 21 31007137 | E-mail: save@bt-laboratory.com | www.bt-laboratory.com