

## VATE1 Rabbit Polyclonal Antibody

### Description

Product type	Primary Antibody
Code	BT-AP05437
Host	Rabbit
Isotype	IgG
Size	20ul, 50ul, 100ul
Immunogen	Synthesized peptide derived from human VATE1
Mol wt	24860
Species reactivity	Human, Mouse, Rat
Clonality	Polyclonal
Recommended application	WB
Concentration	1 mg/ml
Full name	VATE1
Synonyms	VATE1

This product is for research use only, not for use in human, therapeutic or diagnostic procedure.

### Background

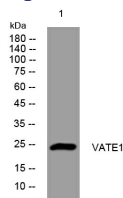
This gene encodes a component of vacuolar ATPase (V-ATPase) a multisubunit enzyme that mediates acidification of eukaryotic intracellular organelles. V-ATPase dependent organelle acidification is necessary for such intracellular processes as protein sorting| zymogen activation| receptor-mediated endocytosis| and synaptic vesicle proton gradient generation. V-ATPase is composed of a cytosolic V1 domain and a transmembrane V0 domain. The V1 domain consists of three A| three B| and two G subunits| as well as a C| D| E| F| and H subunit. The V1 domain contains the ATP catalytic site. This gene encodes alternate transcriptional splice variants| encoding different V1 domain E subunit isoforms. Pseudogenes for this gene have been found in the genome.

### Recommended Dilution

WB: 1: 500 - 1: 2000

Not yet tested in other applications.

### Images



Western blot analysis of lysates from HeLa cells, primary antibody was diluted at 1:1000, 4°C overnight

### Storage

-20°C for 1 year