

MKP-1/2 Polyclonal Antibody

Description

Product type	Primary Antibody
Code	BT-AP05442
Host	Rabbit
Isotype	IgG
Size	20ul, 50ul, 100ul
Immunogen	The antiserum was produced against synthesized peptide derived from human MKP-1/2. AA range:261-310
Mol wt	39298
Species reactivity	Human, Mouse, Rat
Clonality	Polyclonal
Recommended application	WB, IHC-p, ELISA
Concentration	1 mg/ml
Full name	MKP-1/2 Antibody
Synonyms	DUSP1; CL100; MKP1; PTPN10; VH1; Dual specificity protein phosphatase 1; Dual specificity protein phosphatase hVH1; Mitogen-activated protein kinase phosphatase 1; MAP kinase phosphatase 1; MKP-1; Pro

This product is for research use only, not for use in human, therapeutic or diagnostic procedure.

Background

Dual specificity protein phosphatase 4 encoded by DUSP14 is a member of the dual specificity protein phosphatase subfamily. These phosphatases inactivate their target kinases by dephosphorylating both the phosphoserine/threonine and phosphotyrosine residues. They negatively regulate members of the mitogen-activated protein (MAP) kinase superfamily (MAPK/ERK, SAPK/JNK, p38), which are associated with cellular proliferation and differentiation. Different members of the family of dual specificity phosphatases show distinct substrate specificities for various MAP kinases, different tissue distribution and subcellular localization, and different modes of inducibility of their expression by extracellular stimuli. This gene product inactivates ERK1, ERK2 and JNK, is expressed in a variety of tissues, and is localized in the nucleus. Two alternatively spliced transcript variants, encoding distinct isoforms, have been observed for this gene. In addition, multiple polyadenylation sites have been reported.

Recommended Dilution

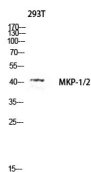
WB: 1: 500 - 1: 2000

IHC: 1: 100 - 1: 300

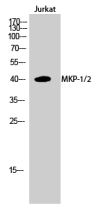
ELISA: 1: 20000

Not yet tested in other applications.

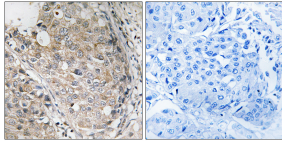
Images



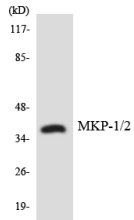
Western blot analysis of 293T lysis using MKP-1/2 antibody. Antibody was diluted at 1:1000 cells nucleus.



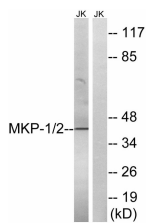
Western Blot analysis of Jurkat cells using MKP-1/2 Polyclonal Antibody diluted at 1:1000 cells nucleus.



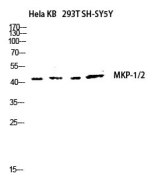
Immunohistochemistry analysis of paraffin-embedded human breast carcinoma tissue, using MKP-1/2 Antibody. The picture on the right is blocked with the synthesized peptide.



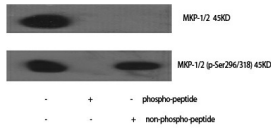
Western blot analysis of the lysates from HepG2 cells using MKP-1/2 antibody.



Western blot analysis of lysates from Jurkat cells, using MKP-1/2 Antibody. The lane on the right is blocked with the synthesized peptide.



Western blot analysis of Hela KB 293T SH-SY5Y lysis using MKP-1/2 antibody. Antibody was diluted at 1:1000 cells nucleus.



Western Blot analysis of various cells using MKP-1/2 Polyclonal Antibody diluted at 1:1000 cells nucleus.

Storage

-20°C for one year

501 Changsheng S Rd, Nanhu Dist, Jiaxing, Zhejiang, China

Tel: 86 21 31007137 | E-mail: save@bt-laboratory.com | www.bt-laboratory.com