

MKP-2 Polyclonal Antibody

Description

Product type	Primary Antibody
Code	BT-AP05443
Host	Rabbit
Isotype	IgG
Size	20ul, 50ul, 100ul
Immunogen	The antiserum was produced against synthesized peptide derived from human DUSP4. AA range:81-130
Mol wt	42953
Species reactivity	Human, Mouse, Rat, Monkey
Clonality	Polyclonal
Recommended application	WB, IHC-p, ELISA
Concentration	1 mg/ml
Full name	MKP-2 Antibody
Synonyms	DUSP4; MKP2; VH2; Dual specificity protein phosphatase 4; Dual specificity protein phosphatase hVH2; Mitogen-activated protein kinase phosphatase 2; MAP kinase phosphatase 2; MKP-2

This product is for research use only, not for use in human, therapeutic or diagnostic procedure.

Background

The dual specificity phosphatase 4 encoded by DUSP4 is a member of the dual specificity protein phosphatase subfamily. These phosphatases inactivate their target kinases by dephosphorylating both the phosphoserine/threonine and phosphotyrosine residues. They negatively regulate members of the mitogen-activated protein (MAP) kinase superfamily (MAPK/ERK, SAPK/JNK, p38), which are associated with cellular proliferation and differentiation. Different members of the family of dual specificity phosphatases show distinct substrate specificities for various MAP kinases, different tissue distribution and subcellular localization, and different modes of inducibility of their expression by extracellular stimuli. This gene product inactivates ERK1, ERK2 and JNK, is expressed in a variety of tissues, and is localized in the nucleus. Two alternatively spliced transcript variants, encoding distinct isoforms, have been observed for this gene. In addition, multiple polyadenylation sites have been reported.

Recommended Dilution

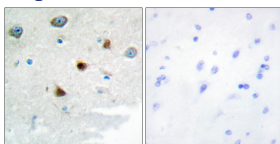
WB: 1: 500 - 1: 2000

IHC: 1: 100 - 1: 300

ELISA: 1: 20000

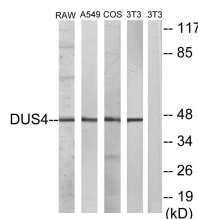
Not yet tested in other applications.

Images



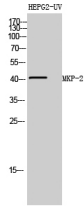
Immunohistochemistry analysis of paraffin-embedded human brain tissue, using DUSP4 Antibody.

The picture on the right is blocked with the synthesized peptide.



Western blot analysis of lysates from RAW264.7, A549, COS7, and NIH/3T3 cells, using DUSP4

Antibody. The lane on the right is blocked with the synthesized peptide.



Western Blot analysis of HEPG2-UV cells using MKP-2 Polyclonal Antibody diluted at 1:1000 cells nucleus.

Storage

-20°C for one year

501 Changsheng S Rd, Nanhu Dist, Jiaxing, Zhejiang, China

Tel: 86 21 31007137 | E-mail: save@bt-laboratory.com | www.bt-laboratory.com