

MLK1 Polyclonal Antibody

Description

Product type	Primary Antibody
Code	BT-AP05455
Host	Rabbit
Isotype	IgG
Size	20ul, 50ul, 100ul
Immunogen	The antiserum was produced against synthesized peptide derived from human MAP3K9. AA range:561-610
Mol wt	121895
Species reactivity	Human, Mouse
Clonality	Polyclonal
Recommended application	IHC-p, ELISA
Concentration	1 mg/ml
Full name	MLK1 Antibody
Synonyms	MAP3K9; MLK1; PRKE1; Mitogen-activated protein kinase kinase kinase 9; Mixed lineage kinase 1

This product is for research use only, not for use in human, therapeutic or diagnostic procedure.

Background

MAP3K9 (Mitogen-Activated Protein Kinase Kinase Kinase 9) is a Protein Coding gene. Diseases associated with MAP3K9 include retroperitoneal neuroblastoma. Among its related pathways are MAP Kinase Signaling and TGF-Beta Pathway. GO annotations related to this gene include protein homodimerization activity and protein kinase activity. An important paralog of this gene is KSR1.

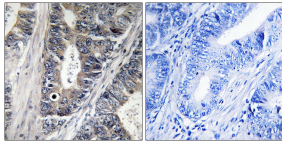
Recommended Dilution

IHC: 1: 100 - 1: 300

ELISA: 1: 20000

Not yet tested in other applications.

Images



Immunohistochemistry analysis of paraffin-embedded human colon carcinoma tissue, using MAP3K9 Antibody. The picture on the right is blocked with the synthesized peptide.

Storage

-20°C for one year

501 Changsheng S Rd, Nanhu Dist, Jiaxing, Zhejiang, China

Tel: 86 21 31007137 | E-mail: save@bt-laboratory.com | www.bt-laboratory.com