

MLK3 Polyclonal Antibody

Description

Product type	Primary Antibody
Code	BT-AP05458
Host	Rabbit
Isotype	IgG
Size	20ul, 50ul, 100ul
Immunogen	The antiserum was produced against synthesized peptide derived from human MLK3. AA range:640-689
Mol wt	92688
Species reactivity	Human, Mouse, Rat
Clonality	Polyclonal
Recommended application	IHC-p, ELISA
Concentration	1 mg/ml
Full name	MLK3 Antibody
Synonyms	MAP3K11; MLK3; PTK1; SPRK; Mitogen-activated protein kinase kinase kinase 11; Mixed lineage kinase 3; Src-homology 3 domain-containing proline-rich kinase

This product is for research use only, not for use in human, therapeutic or diagnostic procedure.

Background

The protein encoded by MAP3K11 is a member of the serine/threonine kinase family. This kinase contains a SH3 domain and a leucine zipper-basic motif. This kinase preferentially activates MAPK8/JNK kinase, and functions as a positive regulator of JNK signaling pathway. This kinase can directly phosphorylate, and activates I κ B kinase alpha and beta, and is found to be involved in the transcription activity of NF- κ B mediated by Rho family GTPases and CDC42.

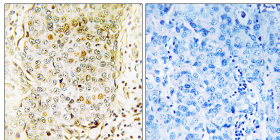
Recommended Dilution

IHC: 1: 100 - 1: 300

ELISA: 1: 20000

Not yet tested in other applications.

Images



Immunohistochemistry analysis of paraffin-embedded human breast carcinoma tissue, using MLK3 Antibody. The picture on the right is blocked with the synthesized peptide.

Storage

-20°C for one year