

## MLK4 Polyclonal Antibody

### Description

<b>Product type</b>	Primary Antibody
<b>Code</b>	BT-AP05459
<b>Host</b>	Rabbit
<b>Isotype</b>	IgG
<b>Size</b>	20ul, 50ul, 100ul
<b>Immunogen</b>	The antiserum was produced against synthesized peptide derived from human MAP3KL4. AA range:631-680
<b>Mol wt</b>	113957
<b>Species reactivity</b>	Human
<b>Clonality</b>	Polyclonal
<b>Recommended application</b>	WB, ELISA
<b>Concentration</b>	1 mg/ml
<b>Full name</b>	MLK4 Antibody
<b>Synonyms</b>	MLK4; KIAA1804; Mitogen-activated protein kinase kinase kinase MLK4; Mixed lineage kinase 4

**This product is for research use only, not for use in human, therapeutic or diagnostic procedure.**

### Background

MLK4 is a Protein Coding gene. Mitogen-activated protein kinase kinase kinase MLK4 is a negative regulator of TLR4 signaling. Does not activate JNK1/MAPK8 pathway, p38/MAPK14, nor ERK2/MAPK1 pathways. Gene Ontology (GO) annotations related to this gene include protein homodimerization activity and protein kinase activity. An important paralog of this gene is KSR1.

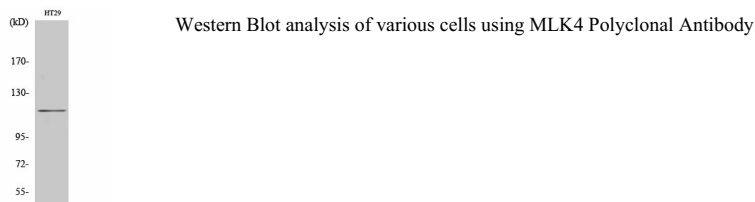
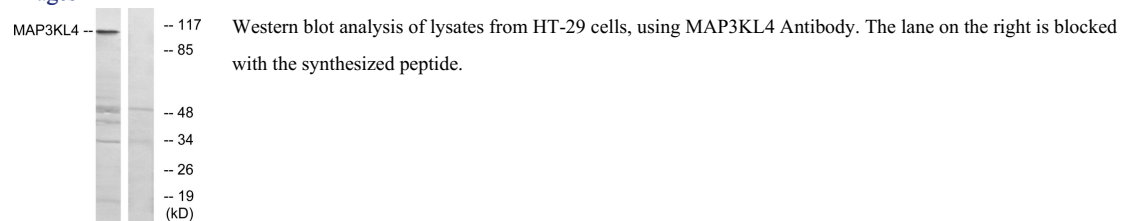
### Recommended Dilution

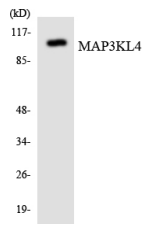
WB: 1: 500 - 1: 2000

ELISA: 1: 20000

Not yet tested in other applications.

### Images





Western blot analysis of the lysates from HepG2 cells using MAP3KL4 antibody.

### Storage

-20°C for one year

501 Changsheng S Rd, Nanhu Dist, Jiaxing, Zhejiang, China

Tel: 86 21 31007137 | E-mail: [save@bt-laboratory.com](mailto:save@bt-laboratory.com) | [www.bt-laboratory.com](http://www.bt-laboratory.com)