

MLKL Polyclonal Antibody

Description

Product type	Primary Antibody
Code	BT-AP05460
Host	Rabbit
Isotype	IgG
Size	20ul, 50ul, 100ul
Immunogen	Synthesized peptide derived from MLKL . at AA range: 40-120
Mol wt	54479
Species reactivity	Human
Clonality	Polyclonal
Recommended application	WB, ELISA
Concentration	1 mg/ml
Full name	MLKL Antibody
Synonyms	MLKL; Mixed lineage kinase domain-like protein

This product is for research use only, not for use in human, therapeutic or diagnostic procedure.

Background

MLKL belongs to the protein kinase superfamily. Mixed lineage kinase domain-like protein contains a protein kinase-like domain; however, is thought to be inactive because it lacks several residues required for activity. Mixed lineage kinase domain-like protein plays a critical role in tumor necrosis factor (TNF)-induced necroptosis, a programmed cell death process, via interaction with receptor-interacting protein 3 (RIP3), which is a key signaling molecule in necroptosis pathway. Inhibitor studies and knockdown of this gene inhibited TNF-induced necrosis. High levels of this protein and RIP3 are associated with inflammatory bowel disease in children. Alternatively spliced transcript variants have been described for this gene.

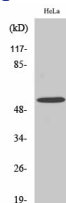
Recommended Dilution

WB: 1: 500 - 1: 2000

ELISA: 1: 20000

Not yet tested in other applications.

Images



Western Blot analysis of various cells using MLKL Polyclonal Antibody diluted at 1:500

Storage

-20°C for one year