

MMP-1 Polyclonal Antibody

Description

Product type	Primary Antibody
Code	BT-AP05470
Host	Rabbit
Isotype	IgG
Size	20ul, 50ul, 100ul
Immunogen	Synthesized peptide derived from MMP-1 . at AA range: 190-270
Mol wt	54007
Species reactivity	Human
Clonality	Polyclonal
Recommended application	WB, ELISA
Concentration	1 mg/ml
Full name	MMP-1 Antibody
Synonyms	MMP1; CLG; Interstitial collagenase; Fibroblast collagenase; Matrix metalloproteinase-1; MMP-1

This product is for research use only, not for use in human, therapeutic or diagnostic procedure.

Background

MMP1 encodes a member of the peptidase M10 family of matrix metalloproteinases (MMPs). Proteins in this family are involved in the breakdown of extracellular matrix in normal physiological processes, such as embryonic development, reproduction, and tissue remodeling, as well as in disease processes, such as arthritis and metastasis. The encoded preproprotein is proteolytically processed to generate the mature protease. This secreted protease (matrix metalloproteinase 1) breaks down the interstitial collagens, including types I, II, and III. MMP1 is part of a cluster of MMP genes on chromosome 11. Mutations in MMP1 are associated with chronic obstructive pulmonary disease (COPD). Alternative splicing results in multiple transcript variants, at least one of which encodes an isoform that is proteolytically processed.

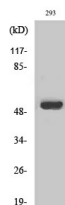
Recommended Dilution

WB: 1: 500 - 1: 2000

ELISA: 1: 5000

Not yet tested in other applications.

Images



Western Blot analysis of various cells using MMP-1 Polyclonal Antibody

Storage

-20°C for one year