

## MMP-1 Polyclonal Antibody

### Description

<b>Product type</b>	Primary Antibody
<b>Code</b>	BT-AP05471
<b>Host</b>	Rabbit
<b>Isotype</b>	IgG
<b>Size</b>	20ul, 50ul, 100ul
<b>Immunogen</b>	The antiserum was produced against synthesized peptide derived from human MMP-1. AA range:411-460
<b>Mol wt</b>	54007
<b>Species reactivity</b>	Human
<b>Clonality</b>	Polyclonal
<b>Recommended application</b>	WB, IHC-p, IF, ELISA
<b>Concentration</b>	1 mg/ml
<b>Full name</b>	MMP-1 Antibody
<b>Synonyms</b>	MMP1; CLG; Interstitial collagenase; Fibroblast collagenase; Matrix metalloproteinase-1; MMP-1

**This product is for research use only, not for use in human, therapeutic or diagnostic procedure.**

### Background

MMP1 encodes a member of the peptidase M10 family of matrix metalloproteinases (MMPs). Interstitial collagenase in this family are involved in the breakdown of extracellular matrix in normal physiological processes, such as embryonic development, reproduction, and tissue remodeling, as well as in disease processes, such as arthritis and metastasis. The encoded preproprotein is proteolytically processed to generate the mature protease. This secreted protease breaks down the interstitial collagens, including types I, II, and III. MMP1 is part of a cluster of MMP genes on chromosome 11. Mutations in this gene are associated with chronic obstructive pulmonary disease (COPD). Alternative splicing results in multiple transcript variants, at least one of which encodes an isoform that is proteolytically processed.

### Recommended Dilution

WB: 1: 500 - 1: 2000

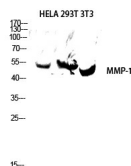
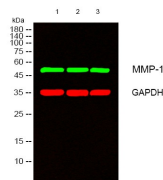
IHC: 1: 100 - 1: 300

IF: 1: 200 - 1: 1000

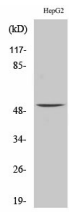
ELISA: 1: 20000

Not yet tested in other applications.

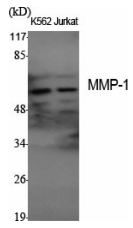
### Images



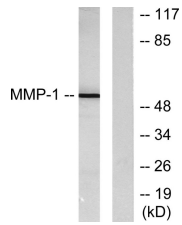
Western blot analysis of HELA 293T 3T3 lysis using MMP-1 antibody. Antibody was diluted at 1:1000



Western Blot analysis of HepG2 cells using MMP-1 Polyclonal Antibody diluted at 1:1000



Western Blot analysis of various cells using MMP-1 Polyclonal Antibody diluted at 1:1000



Western blot analysis of lysates from HepG2 cells, using MMP-1 Antibody. The lane on the right is blocked with the synthesized peptide.

### Storage

-20°C for one year

501 Changsheng S Rd, Nanhu Dist, Jiaxing, Zhejiang, China

Tel: 86 21 31007137 | E-mail: [save@bt-laboratory.com](mailto:save@bt-laboratory.com) | [www.bt-laboratory.com](http://www.bt-laboratory.com)