

MMP-15 Polyclonal Antibody

Description

Product type	Primary Antibody
Code	BT-AP05479
Host	Rabbit
Isotype	IgG
Size	20ul, 50ul, 100ul
Immunogen	The antiserum was produced against synthesized peptide derived from human MMP-15. AA range:611-660
Mol wt	75807
Species reactivity	Human, Mouse
Clonality	Polyclonal
Recommended application	WB, ELISA
Concentration	1 mg/ml
Full name	MMP-15 Antibody
Synonyms	MMP15; Matrix metalloproteinase-15; MMP-15; Membrane-type matrix metalloproteinase 2; MT-MMP 2; MTMMP2; Membrane-type-2 matrix metalloproteinase; MT2-MMP; MT2MMP; SMCP-2

This product is for research use only, not for use in human, therapeutic or diagnostic procedure.

Background

MMP15 encodes a member of the peptidase M10 family and membrane-type subfamily of matrix metalloproteinases (MMPs). Proteins in this family are involved in the breakdown of extracellular matrix in normal physiological processes, such as embryonic development, reproduction, and tissue remodeling, as well as in disease processes, such as arthritis and metastasis. Members of this subfamily contain a transmembrane domain suggesting that these proteins are expressed at the cell surface rather than secreted. The encoded preproprotein is proteolytically processed to generate the mature protease. This protein may play a role in cancer progression.

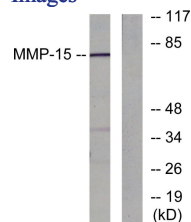
Recommended Dilution

WB: 1: 500 - 1: 2000

ELISA: 1: 10000

Not yet tested in other applications.

Images



Western blot analysis of lysates from MDA-MB-435 cells, using MMP-15 Antibody. The lane on the right is blocked with the synthesized peptide.

Storage

-20°C for one year