

MMP-16 Polyclonal Antibody

Description

Product type	Primary Antibody
Code	BT-AP05480
Host	Rabbit
Isotype	IgG
Size	20ul, 50ul, 100ul
Immunogen	The antiserum was produced against synthesized peptide derived from human MMP-16. AA range:551-600
Mol wt	69521
Species reactivity	Human, Mouse, Rat
Clonality	Polyclonal
Recommended application	WB, IHC-p, ELISA
Concentration	1 mg/ml
Full name	MMP-16 Antibody
Synonyms	MMP16; MMPX2; Matrix metalloproteinase-16; MMP-16; MMP-X2; Membrane-type matrix metalloproteinase 3; MT-MMP 3; MTMMP3; Membrane-type-3 matrix metalloproteinase; MT3-MMP; MT3MMP

This product is for research use only, not for use in human, therapeutic or diagnostic procedure.

Background

Proteins of the matrix metalloproteinase (MMP) family are involved in the breakdown of extracellular matrix in normal physiological processes, such as embryonic development, reproduction, and tissue remodeling, as well as in disease processes, such as arthritis and metastasis. Most MMP's are secreted as inactive proproteins which are activated when cleaved by extracellular proteinases. Matrix metalloproteinase-16 activates MMP2 by cleavage. MMP16 was once referred to as MT-MMP2, but was renamed as MT-MMP3 or MMP16.

Recommended Dilution

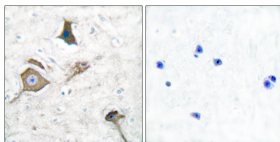
WB: 1: 500 - 1: 2000

IHC: 1: 100 - 1: 300

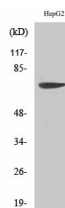
ELISA: 1: 10000

Not yet tested in other applications.

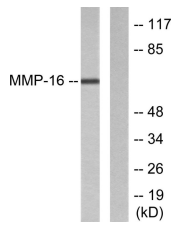
Images



Immunohistochemistry analysis of paraffin-embedded human brain tissue, using MMP-16 Antibody. The picture on the right is blocked with the synthesized peptide.



Western Blot analysis of various cells using MMP-16 Polyclonal Antibody diluted at 1:500



Western blot analysis of lysates from HepG2 cells, using MMP-16 Antibody. The lane on the right is blocked with the synthesized peptide.

Storage

-20°C for one year

501 Changsheng S Rd, Nanhu Dist, Jiaxing, Zhejiang, China

Tel: 86 21 31007137 | E-mail: save@bt-laboratory.com | www.bt-laboratory.com