

## WDR20 Rabbit Polyclonal Antibody

### Description

Product type	Primary Antibody
Code	BT-AP05484
Host	Rabbit
Isotype	IgG
Size	20ul, 50ul, 100ul
Immunogen	Synthesized peptide derived from human WDR20
Mol wt	N/A
Species reactivity	Human, Mouse
Clonality	Polyclonal
Recommended application	WB
Concentration	1 mg/ml
Full name	WDR20
Synonyms	WDR20; WD repeat-containing protein 20; Protein DMR

This product is for research use only, not for use in human, therapeutic or diagnostic procedure.

### Background

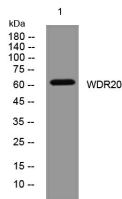
This gene encodes a WD repeat-containing protein that functions to preserve and regulate the activity of the USP12-UAF1 deubiquitinating enzyme complex. Multiple alternatively spliced transcript variants have been found for this gene.

### Recommended Dilution

WB: 1: 500 - 1: 2000

Not yet tested in other applications.

### Images



### Storage

-20°C for 1 year

501 Changsheng S Rd, Nanhu Dist, Jiaxing, Zhejiang, China

Tel: 86 21 31007137 | E-mail: [save@bt-laboratory.com](mailto:save@bt-laboratory.com) | [www.bt-laboratory.com](http://www.bt-laboratory.com)