

MN1 Polyclonal Antibody

Description

Product type	Primary Antibody
Code	BT-AP05491
Host	Rabbit
Isotype	IgG
Size	20ul, 50ul, 100ul
Immunogen	The antiserum was produced against synthesized peptide derived from human MN1. AA range:821-870
Mol wt	135873
Species reactivity	Human
Clonality	Polyclonal
Recommended application	WB, ELISA
Concentration	1 mg/ml
Full name	MN1 Antibody
Synonyms	MN1; Probable tumor suppressor protein MN1

This product is for research use only, not for use in human, therapeutic or diagnostic procedure.

Background

Meningioma 1 (MN1) contains two sets of CAG repeats. It is disrupted by a balanced translocation (4;22) in a meningioma, and its inactivation may contribute to meningioma pathogenesis.

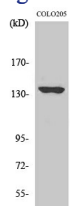
Recommended Dilution

WB: 1: 500 - 1: 2000

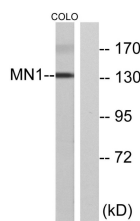
ELISA: 1: 40000

Not yet tested in other applications.

Images



Western Blot analysis of various cells using MN1 Polyclonal Antibody diluted at 1:2000



Western blot analysis of lysates from COLO cells, using MN1 Antibody. The lane on the right is blocked with the synthesized peptide.

Storage

-20°C for one year