

Mnk1 Polyclonal Antibody

Description

Product type	Primary Antibody
Code	BT-AP05494
Host	Rabbit
Isotype	IgG
Size	20ul, 50ul, 100ul
Immunogen	The antiserum was produced against synthesized peptide derived from human MNK1. AA range:216-265
Mol wt	51342
Species reactivity	Human, Mouse, Rat
Clonality	Polyclonal
Recommended application	IHC-p, ELISA
Concentration	1 mg/ml
Full name	Mnk1 Antibody
Synonyms	MKNK1; MNK1; MAP kinase-interacting serine/threonine-protein kinase 1; MAP kinase signal-integrating kinase 1; MAPK signal-integrating kinase 1; Mnk1

This product is for research use only, not for use in human, therapeutic or diagnostic procedure.

Background

MKNK1 (MAP kinase interacting serine/threonine kinase 1) encodes a Ser/Thr protein kinase that interacts with, and is activated by ERK1 and p38 mitogen-activated protein kinases, and thus may play a role in the response to environmental stress and cytokines. This kinase may also regulate transcription by phosphorylating eIF4E via interaction with the C-terminal region of eIF4G. Alternatively spliced transcript variants have been noted for MKNK1.

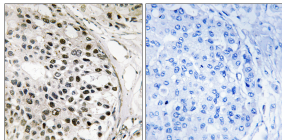
Recommended Dilution

IHC: 1: 100 - 1: 300

ELISA: 1: 40000

Not yet tested in other applications.

Images



Immunohistochemistry analysis of paraffin-embedded human breast carcinoma tissue, using MNK1 Antibody. The picture on the right is blocked with the synthesized peptide.

Storage

-20°C for one year