

Mob1A Polyclonal Antibody

Description

Product type	Primary Antibody
Code	BT-AP05502
Host	Rabbit
Isotype	IgG
Size	20ul, 50ul, 100ul
Immunogen	The antiserum was produced against synthesized peptide derived from human MOL1A. AA range:101-150
Mol wt	25091
Species reactivity	Human, Mouse, Monkey
Clonality	Polyclonal
Recommended application	WB, IHC-p, ELISA
Concentration	1 mg/ml
Full name	Mob1A Antibody
Synonyms	MOB1B; MOB4A; MOBKL1A; MOB kinase activator 1B; Mob1 homolog 1A; Mob1A; Mob1B; Mps one binder kinase activator-like 1A

This product is for research use only, not for use in human, therapeutic or diagnostic procedure.

Background

MOB kinase activator 1B encoded by MOB1B is similar to the yeast Mob1 protein. Yeast Mob1 binds Mps1p, a protein kinase essential for spindle pole body duplication and mitotic checkpoint regulation. Three transcript variants encoding different isoforms have been found for MOB1B.

Recommended Dilution

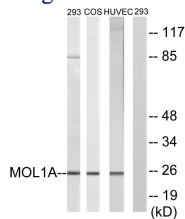
WB: 1: 500 - 1: 2000

IHC: 1: 100 - 1: 300

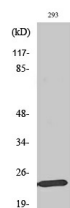
ELISA: 1: 40000

Not yet tested in other applications.

Images



Western blot analysis of lysates from 293, COS7, and HUVEC cells, treated with IFN 2500U/ml 30', using MOL1A Antibody. The lane on the right is blocked with the synthesized peptide.



Western Blot analysis of various cells using Mob1A Polyclonal Antibody

Storage

-20°C for one year

501 Changsheng S Rd, Nanhu Dist, Jiaxing, Zhejiang, China

Tel: 86 21 31007137 | E-mail: save@bt-laboratory.com | www.bt-laboratory.com