

## Mob3A/B Polyclonal Antibody

### Description

<b>Product type</b>	Primary Antibody
<b>Code</b>	BT-AP05504
<b>Host</b>	Rabbit
<b>Isotype</b>	IgG
<b>Size</b>	20ul, 50ul, 100ul
<b>Immunogen</b>	Synthesized peptide derived from Mob3A/B . at AA range: 1-80
<b>Mol wt</b>	25464
<b>Species reactivity</b>	Human, Mouse
<b>Clonality</b>	Polyclonal
<b>Recommended application</b>	WB, IHC-p, ELISA
<b>Concentration</b>	1 mg/ml
<b>Full name</b>	Mob3A/B Antibody
<b>Synonyms</b>	MOB3A; MOBKL2A; MOB kinase activator 3A; MOB-LAK; Mob1 homolog 2A; Mps one binder kinase activator-like 2A; MOB3B; MOBKL2B; MOB kinase activator 3B; Mob1 homolog 2b; Mps one binder kinase activator-li

This product is for research use only, not for use in human, therapeutic or diagnostic procedure.

### Background

MOB3A (MOB Kinase Activator 3A) is a Protein Coding gene. An important paralog of this gene is MOB1A.

### Recommended Dilution

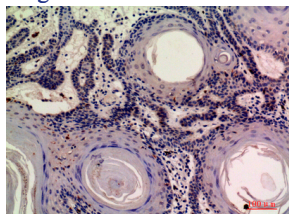
WB: 1: 500 - 1: 2000

IHC-p: 1: 100 - 1: 300

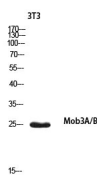
ELISA: 1: 10000

Not yet tested in other applications.

### Images



Immunohistochemical analysis of paraffin-embedded human-skin, antibody was diluted at 1:200



Western blot analysis of 3T3 using Mob3A/B antibody. Secondary antibody was diluted at 1:20000

## Storage

-20°C for one year

501 Changsheng S Rd, Nanhu Dist, Jiaxing, Zhejiang, China

Tel: 86 21 31007137 | E-mail: [save@bt-laboratory.com](mailto:save@bt-laboratory.com) | [www.bt-laboratory.com](http://www.bt-laboratory.com)