

Mob3B Polyclonal Antibody

Description

Product type	Primary Antibody
Code	BT-AP05505
Host	Rabbit
Isotype	IgG
Size	20ul, 50ul, 100ul
Immunogen	The antiserum was produced against synthesized peptide derived from human MOBKL2B. AA range:71-120
Mol wt	25464
Species reactivity	Human, Mouse
Clonality	Polyclonal
Recommended application	WB, IHC-p, ELISA
Concentration	1 mg/ml
Full name	Mob3B Antibody
Synonyms	MOB3B; MOBKL2B; MOB kinase activator 3B; Mob1 homolog 2b; Mps one binder kinase activator-like 2B

This product is for research use only, not for use in human, therapeutic or diagnostic procedure.

Background

MOB kinase activator 3B encoded by MOB3B shares similarity with the yeast Mob1 protein. Yeast Mob1 binds Mps1p, a protein kinase essential for spindle pole body duplication and mitotic checkpoint regulation. MOB3B is located on the opposite strand as the interferon kappa precursor (IFNK) gene.

Recommended Dilution

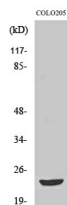
WB: 1: 500 - 1: 2000

IHC: 1: 100 - 1: 300

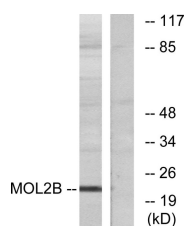
ELISA: 1: 5000

Not yet tested in other applications.

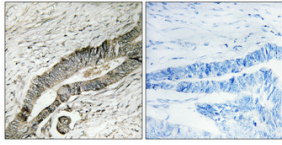
Images



Western Blot analysis of various cells using Mob3B Polyclonal Antibody



Western blot analysis of lysates from COLO cells, using MOBKL2B Antibody. The lane on the right is blocked with the synthesized peptide.



Immunohistochemical analysis of paraffin-embedded Human colon cancer. Antibody was diluted at 1:100(4° overnight). High-pressure and temperature Tris-EDTA,pH8.0 was used for antigen retrieval. Negative control (right) obtained from antibody was pre-absorbed by immunogen peptide.

Storage

-20°C for one year

501 Changsheng S Rd, Nanhu Dist, Jiaxing, Zhejiang, China

Tel: 86 21 31007137 | E-mail: save@bt-laboratory.com | www.bt-laboratory.com