

Moesin/Ezrin/Radixin Polyclonal Antibody

Description

Product type	Primary Antibody
Code	BT-AP05508
Host	Rabbit
Isotype	IgG
Size	20ul, 50ul, 100ul
Immunogen	The antiserum was produced against synthesized peptide derived from human Moesin/Ezrin/Radixin. AA range:524-573
Mol wt	67820/69413/68564
Species reactivity	Human, Mouse, Rat
Clonality	Polyclonal
Recommended application	WB, IHC-p, ELISA
Concentration	1 mg/ml
Full name	Moesin/Ezrin/Radixin Antibody
Synonyms	MSN; Moesin; Membrane-organizing extension spike protein; RDX; Radixin; EZR; VIL2; Ezrin; Cytovillin; Villin-2; p81

This product is for research use only, not for use in human, therapeutic or diagnostic procedure.

Background

Moesin (for membrane-organizing extension spike protein) is a member of the ERM family which includes ezrin and radixin. ERM proteins appear to function as cross-linkers between plasma membranes and actin-based cytoskeletons. Moesin is localized to filopodia and other membranous protrusions that are important for cell-cell recognition and signaling and for cell movement.

Recommended Dilution

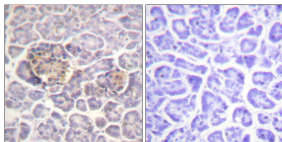
WB: 1: 500 - 1: 2000

IHC: 1: 100 - 1: 300

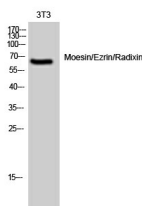
ELISA: 1: 20000

Not yet tested in other applications.

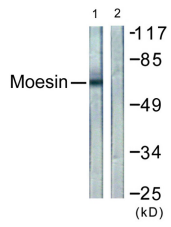
Images



Immunohistochemistry analysis of paraffin-embedded human pancreas tissue, using Moesin/Ezrin/Radixin Antibody. The picture on the right is blocked with the synthesized peptide.



Western Blot analysis of 3T3 cells using Moesin/Ezrin/Radixin Polyclonal Antibody diluted at 1:2000



Western blot analysis of lysates from NIH/3T3 cells, using Moesin/Ezrin/Radixin Antibody. The lane on the right is blocked with the synthesized peptide.

Storage

-20°C for one year

501 Changsheng S Rd, Nanhu Dist, Jiaxing, Zhejiang, China

Tel: 86 21 31007137 | E-mail: save@bt-laboratory.com | www.bt-laboratory.com