

MOF Polyclonal Antibody

Description

Product type	Primary Antibody
Code	BT-AP05509
Host	Rabbit
Isotype	IgG
Size	20ul, 50ul, 100ul
Immunogen	The antiserum was produced against synthesized peptide derived from human MYST1. AA range:101-150
Mol wt	52403
Species reactivity	Human, Mouse, Rat
Clonality	Polyclonal
Recommended application	IHC-p, ELISA
Concentration	1 mg/ml
Full name	MOF Antibody
Synonyms	KAT8; MOF; MYST1; PP7073; Histone acetyltransferase KAT8; Lysine acetyltransferase 8; MOZ; YBF2/SAS3, SAS2 and TIP60 protein 1; MYST-1; hMOF

This product is for research use only, not for use in human, therapeutic or diagnostic procedure.

Background

KAT8 (lysine acetyltransferase 8) encodes a member of the MYST histone acetylase protein family. The encoded protein has a characteristic MYST domain containing an acetyl-CoA-binding site, a chromodomain typical of proteins which bind histones, and a C2HC-type zinc finger. Multiple transcript variants encoding different isoforms have been found for KAT8.

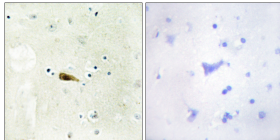
Recommended Dilution

IHC: 1: 100 - 1: 300

ELISA: 1: 10000

Not yet tested in other applications.

Images



Immunohistochemistry analysis of paraffin-embedded human brain tissue, using MYST1 Antibody. The picture on the right is blocked with the synthesized peptide.

Storage

-20°C for one year