

Mos Polyclonal Antibody

Description

Product type	Primary Antibody
Code	BT-AP05518
Host	Rabbit
Isotype	IgG
Size	20ul, 50ul, 100ul
Immunogen	The antiserum was produced against synthesized peptide derived from human MOS. AA range:61-110
Mol wt	37820
Species reactivity	Human
Clonality	Polyclonal
Recommended application	WB, IF, ELISA
Concentration	1 mg/ml
Full name	Mos Antibody
Synonyms	MOS; Proto-oncogene serine/threonine-protein kinase mos; Oocyte maturation factor mos; Proto-oncogene c-Mos

This product is for research use only, not for use in human, therapeutic or diagnostic procedure.

Background

MOS is a serine/threonine kinase that activates the MAP kinase cascade through direct phosphorylation of the MAP kinase activator MEK.

Recommended Dilution

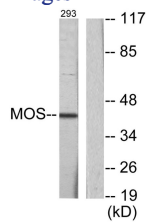
WB: 1: 500 - 1: 2000

IF: 1: 200 - 1: 1000

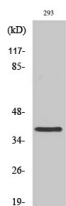
ELISA: 1: 10000

Not yet tested in other applications.

Images



Western blot analysis of lysates from 293 cells, using MOS Antibody. The lane on the right is blocked with the synthesized peptide.



Western Blot analysis of various cells using Mos Polyclonal Antibody

Storage

-20°C for one year

