

XPC Rabbit Polyclonal Antibody

Description

Product type	Primary Antibody
Code	BT-AP05520
Host	Rabbit
Isotype	IgG
Size	20ul, 50ul, 100ul
Immunogen	Synthesized peptide derived from human XPC
Mol wt	103400
Species reactivity	Human, Mouse
Clonality	Polyclonal
Recommended application	WB
Concentration	1 mg/ml
Full name	XPC
Synonyms	XPC

This product is for research use only, not for use in human, therapeutic or diagnostic procedure.

Background

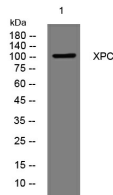
This gene encodes a component of the nucleotide excision repair (NER) pathway. There are multiple components involved in the NER pathway including Xeroderma pigmentosum (XP) A-G and V| Cockayne syndrome (CS) A and B| and trichothiodystrophy (TTD) group A| etc. This component| XPC| plays an important role in the early steps of global genome NER| especially in damage recognition| open complex formation| and repair protein complex formation. Mutations in this gene or some other NER components result in Xeroderma pigmentosum| a rare autosomal recessive disorder characterized by increased sensitivity to sunlight with the development of carcinomas at an early age. Alternatively spliced transcript variants have been found for this gene.

Recommended Dilution

WB: 1: 500 - 1: 2000

Not yet tested in other applications.

Images



Western blot analysis of lysates from PC-12 cells, primary antibody was diluted at 1:1000, 4°C overnight

Storage

-20°C for 1 year