

XYLT1 Rabbit Polyclonal Antibody

Description

Product type	Primary Antibody
Code	BT-AP05526
Host	Rabbit
Isotype	IgG
Size	20ul, 50ul, 100ul
Immunogen	Synthesized peptide derived from human XYLT1
Mol wt	N/A
Species reactivity	Human, Mouse, Rat
Clonality	Polyclonal
Recommended application	WB
Concentration	1 mg/ml
Full name	XYLT1
Synonyms	XYLT1; Xylosyltransferase 1; EC 2.4.2.26; Peptide O-xylosyltransferase 1; Xylosyltransferase I; XT-I; XyIT-I

This product is for research use only, not for use in human, therapeutic or diagnostic procedure.

Background

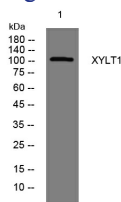
This locus encodes a xylosyltransferase enzyme. The encoded protein catalyzes transfer of UDP-xylose to serine residues of an acceptor protein substrate. This transfer reaction is necessary for biosynthesis of glycosaminoglycan chains. Mutations in this gene have been associated with increased severity of pseudoxanthoma elasticum.

Recommended Dilution

WB: 1: 500 - 1: 2000

Not yet tested in other applications.

Images



Western blot analysis of lysates from SW480 cells, primary antibody was diluted at 1:1000, 4°C overnight

Storage

-20°C for 1 year