

## MOX-2 Polyclonal Antibody

### Description

<b>Product type</b>	Primary Antibody
<b>Code</b>	BT-AP05531
<b>Host</b>	Rabbit
<b>Isotype</b>	IgG
<b>Size</b>	20ul, 50ul, 100ul
<b>Immunogen</b>	The antiserum was produced against synthesized peptide derived from human MEOX2. AA range:151-200
<b>Mol wt</b>	33594
<b>Species reactivity</b>	Human, Mouse, Rat
<b>Clonality</b>	Polyclonal
<b>Recommended application</b>	WB, IHC-p, ELISA
<b>Concentration</b>	1 mg/ml
<b>Full name</b>	MOX-2 Antibody
<b>Synonyms</b>	MEOX2; GAX; MOX2; Homeobox protein MOX-2; Growth arrest-specific homeobox; Mesenchyme homeobox 2

This product is for research use only, not for use in human, therapeutic or diagnostic procedure.

### Background

MEOX2 encodes a member of a subfamily of non-clustered, diverged, antennapedia-like homeobox-containing genes. Homeobox protein MOX-2 may play a role in the regulation of vertebrate limb myogenesis. Mutations in the related mouse protein may be associated with craniofacial and/or skeletal abnormalities, in addition to neurovascular dysfunction observed in Alzheimer's disease.

### Recommended Dilution

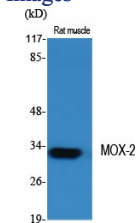
WB: 1: 500 - 1: 2000

IHC: 1: 100 - 1: 300

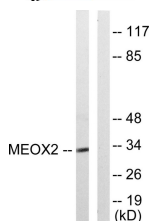
ELISA: 1: 10000

Not yet tested in other applications.

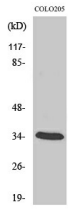
### Images



Western Blot analysis of various cells using MOX-2 Polyclonal Antibody diluted at 1:2000



Western blot analysis of lysates from COLO205 cells, using MEOX2 Antibody. The lane on the right is blocked with the synthesized peptide.



Western Blot analysis of COLO205 cells using MOX-2 Polyclonal Antibody diluted at 1:2000

### Storage

-20°C for one year

501 Changsheng S Rd, Nanhu Dist, Jiaxing, Zhejiang, China

Tel: 86 21 31007137 | E-mail: [save@bt-laboratory.com](mailto:save@bt-laboratory.com) | [www.bt-laboratory.com](http://www.bt-laboratory.com)