

MP68 Polyclonal Antibody

Description

Product type	Primary Antibody
Code	BT-AP05532
Host	Rabbit
Isotype	IgG
Size	20ul, 50ul, 100ul
Immunogen	The antiserum was produced against synthesized peptide derived from human MP68. AA range:9-58
Mol wt	6662
Species reactivity	Human, Mouse
Clonality	Polyclonal
Recommended application	IHC-p, ELISA
Concentration	1 mg/ml
Full name	MP68 Antibody
Synonyms	MP68; C14orf2; 6.8 kDa mitochondrial proteolipid

This product is for research use only, not for use in human, therapeutic or diagnostic procedure.

Background

C14orf2 (Chromosome 14 Open Reading Frame 2) is a Protein Coding gene. The protein is a 6. KDa Mitochondrial Proteolipid.

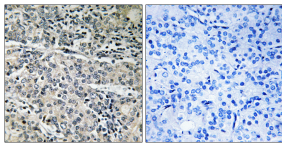
Recommended Dilution

IHC: 1: 100 - 1: 300

ELISA: 1: 20000

Not yet tested in other applications.

Images



Immunohistochemistry analysis of paraffin-embedded human prostate carcinoma tissue, using MP68 Antibody. The picture on the right is blocked with the synthesized peptide.

Storage

-20°C for one year

501 Changsheng S Rd, Nanhu Dist, Jiaxing, Zhejiang, China

Tel: 86 21 31007137 | E-mail: save@bt-laboratory.com | www.bt-laboratory.com