

MPP10 Polyclonal Antibody

Description

Product type	Primary Antibody
Code	BT-AP05535
Host	Rabbit
Isotype	IgG
Size	20ul, 50ul, 100ul
Immunogen	Synthesized peptide derived from MPP10 . at AA range: 60-140
Mol wt	78864
Species reactivity	Human
Clonality	Polyclonal
Recommended application	WB, ELISA
Concentration	1 mg/ml
Full name	MPP10 Antibody
Synonyms	MPHOSPH10; MPP10; U3 small nucleolar ribonucleoprotein protein MPP10; M phase phosphoprotein 10

This product is for research use only, not for use in human, therapeutic or diagnostic procedure.

Background

MPHOSPH10 encodes U3 small nucleolar ribonucleoprotein protein MPP10 that is phosphorylated during mitosis. The protein localizes to the nucleolus during interphase and to the chromosomes during M phase. The protein associates with the U3 small nucleolar ribonucleoprotein 60-80S complexes and may be involved in pre-rRNA processing.

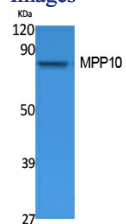
Recommended Dilution

WB: 1: 500 - 1: 2000

ELISA: 1: 10000

Not yet tested in other applications.

Images



Western Blot analysis of extracts from Jurkat cells, using MPP10 Polyclonal Antibody. Secondary antibody was diluted at 1:20000 cells nucleus.

Storage

-20°C for one year