

MPP9 Polyclonal Antibody

Description

Product type	Primary Antibody
Code	BT-AP05538
Host	Rabbit
Isotype	IgG
Size	20ul, 50ul, 100ul
Immunogen	The antiserum was produced against synthesized peptide derived from human MPHOSPH9. AA range:539-588
Mol wt	78084
Species reactivity	Human
Clonality	Polyclonal
Recommended application	WB, ELISA
Concentration	1 mg/ml
Full name	MPP9 Antibody
Synonyms	MPHOSPH9; MPP9; M-phase phosphoprotein 9

This product is for research use only, not for use in human, therapeutic or diagnostic procedure.

Background

MPP9 (M-phase phosphoprotein 9), also known as MPHOSPH9, is a 1,031 amino acid peripheral membrane protein of the Golgi apparatus that exists as two alternatively spliced isoforms. Progression of cells from interphase to mitosis involves alterations in cell structures and activities. The transition from G2 to M phase is induced by M phase-promoting factor (MPF). In M phase, many proteins are phosphorylated directly by MPF or indirectly by kinases activated by MPF. These M phase phosphoproteins (MPPs), also known as MPHOSPHs, permit disassembly of interphase structures and generation of M phase enzymatic activities and structures. The gene encoding MPP9 maps to human chromosome 12, which encodes over 1,100 genes and comprises approximately 4. % of the human genome. Chromosome 12 is associated with a variety of diseases and afflictions, including hypochondrogenesis, achondrogenesis, Kniest dysplasia, Noonan syndrome and trisomy 12p.

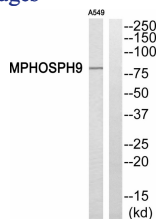
Recommended Dilution

WB: 1: 500 - 1: 2000

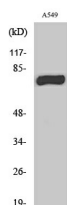
ELISA: 1: 20000

Not yet tested in other applications.

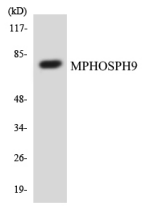
Images



Western blot analysis of MPHOSPH9 Antibody. The lane on the right is blocked with the MPHOSPH9 peptide.



Western Blot analysis of various cells using MPP9 Polyclonal Antibody



Western blot analysis of the lysates from COLO205 cells using MPHOSPH9 antibody.

Storage

-20°C for one year

501 Changsheng S Rd, Nanhu Dist, Jiaxing, Zhejiang, China

Tel: 86 21 31007137 | E-mail: save@bt-laboratory.com | www.bt-laboratory.com