

MRGE Polyclonal Antibody

Description

Product type	Primary Antibody
Code	BT-AP05550
Host	Rabbit
Isotype	IgG
Size	20ul, 50ul, 100ul
Immunogen	The antiserum was produced against synthesized peptide derived from human MRGE. AA range:171-220
Mol wt	34155
Species reactivity	Human, Mouse, Rat
Clonality	Polyclonal
Recommended application	WB, ELISA
Concentration	1 mg/ml
Full name	MRGE Antibody
Synonyms	MRGPRE; GPR167; MRGE; Mas-related G-protein coupled receptor member E; G-protein coupled receptor 167

This product is for research use only, not for use in human, therapeutic or diagnostic procedure.

Background

MRGPRE (MAS Related GPR Family Member E) is a Protein Coding gene. Gene Ontology (GO) annotations related to this gene include G-protein coupled receptor activity. An important paralog of this gene is MRGPRX4. May regulate nociceptor function and/or development, including the sensation or modulation of pain.

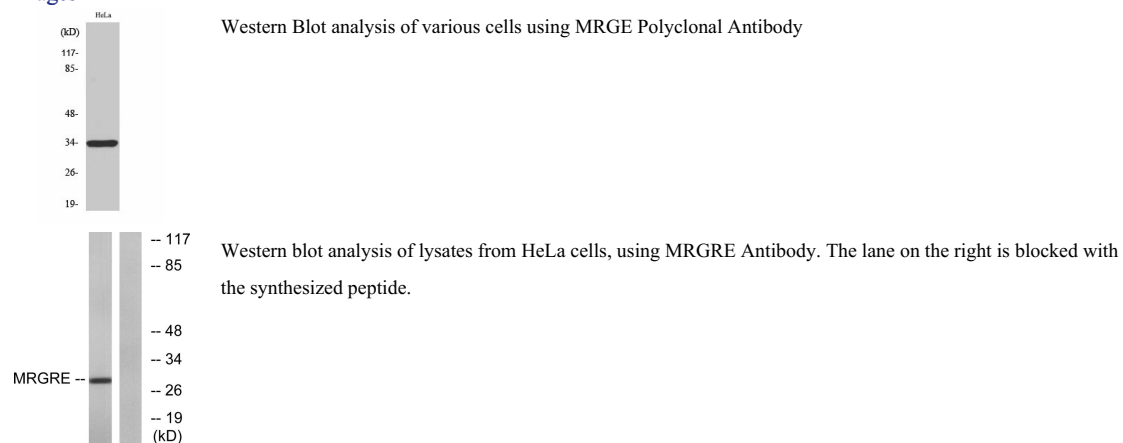
Recommended Dilution

WB: 1: 500 - 1: 2000

ELISA: 1: 40000

Not yet tested in other applications.

Images



Storage

-20°C for one year

501 Changsheng S Rd, Nanhu Dist, Jiaxing, Zhejiang, China

Tel: 86 21 31007137 | E-mail: save@bt-laboratory.com | www.bt-laboratory.com