

MRGF Polyclonal Antibody

Description

Product type	Primary Antibody
Code	BT-AP05551
Host	Rabbit
Isotype	IgG
Size	20ul, 50ul, 100ul
Immunogen	The antiserum was produced against synthesized peptide derived from human MRGRF. AA range:271-320
Mol wt	38171
Species reactivity	Human, Mouse, Rat
Clonality	Polyclonal
Recommended application	WB, IF, ELISA
Concentration	1 mg/ml
Full name	MRGF Antibody
Synonyms	MRGPRF; GPR140; GPR168; MRGF; PSEC0142; Mas-related G-protein coupled receptor member F; Mas-related gene F protein; G-protein coupled receptor 140; G-protein coupled receptor 168

This product is for research use only, not for use in human, therapeutic or diagnostic procedure.

Background

MRGPRF (MAS Related GPR Family Member F) is a Protein Coding gene. Gene Ontology (GO) annotations related to this gene include G-protein coupled receptor activity. An important paralog of this gene is MRGPRX4. May bind to a neuropeptide and may regulate nociceptor function and/or development, including the sensation or modulation of pain.

Recommended Dilution

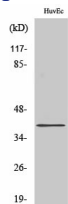
WB: 1: 500 - 1: 2000

IF: 1: 200 - 1: 1000

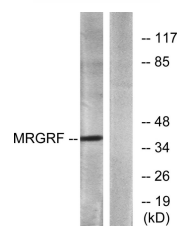
ELISA: 1: 5000

Not yet tested in other applications.

Images



Western Blot analysis of various cells using MRGF Polyclonal Antibody



Western blot analysis of lysates from HUVEC cells, using MRGRF Antibody. The lane on the right is blocked with the synthesized peptide.

Storage

-20°C for one year

501 Changsheng S Rd, Nanhu Dist, Jiaxing, Zhejiang, China

Tel: 86 21 31007137 | E-mail: save@bt-laboratory.com | www.bt-laboratory.com