

MRGG Polyclonal Antibody

Description

Product type	Primary Antibody
Code	BT-AP05552
Host	Rabbit
Isotype	IgG
Size	20ul, 50ul, 100ul
Immunogen	The antiserum was produced against synthesized peptide derived from human MRGRG. AA range:231-280
Mol wt	31518
Species reactivity	Human
Clonality	Polyclonal
Recommended application	WB, IF, ELISA
Concentration	1 mg/ml
Full name	MRGG Antibody
Synonyms	MRGPRG; GPR169; MRGG; Mas-related G-protein coupled receptor member G; G-protein coupled receptor 169

This product is for research use only, not for use in human, therapeutic or diagnostic procedure.

Background

MRGPRG (MAS Related GPR Family Member G) is a Protein Coding gene. Gene Ontology (GO) annotations related to this gene include G-protein coupled receptor activity. An important paralog of this gene is MRGPRX4. May regulate nociceptor function and/or development, including the sensation or modulation of pain.

Recommended Dilution

WB: 1: 500 - 1: 2000

IF: 1: 200 - 1: 1000

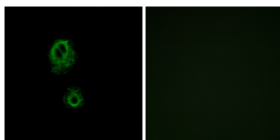
ELISA: 1: 40000

Not yet tested in other applications.

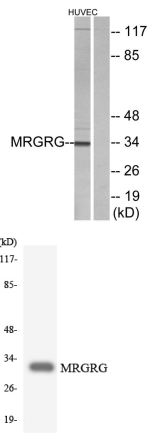
Images



Western Blot analysis of various cells using MRGG Polyclonal Antibody



Immunofluorescence analysis of A549 cells, using MRGRG Antibody. The picture on the right is blocked with the synthesized peptide.



Western blot analysis of lysates from HUVEC cells, using MRGRG Antibody. The lane on the right is blocked with the synthesized peptide.

Western blot analysis of the lysates from HepG2 cells using MRGRG antibody.

Storage

-20°C for one year

501 Changsheng S Rd, Nanhu Dist, Jiaxing, Zhejiang, China

Tel: 86 21 31007137 | E-mail: save@bt-laboratory.com | www.bt-laboratory.com