

MRGX4 Polyclonal Antibody

Description

| | |
|-------------------------|--|
| Product type | Primary Antibody |
| Code | BT-AP05557 |
| Host | Rabbit |
| Isotype | IgG |
| Size | 20ul, 50ul, 100ul |
| Immunogen | The antiserum was produced against synthesized peptide derived from human MRGX4. AA range:271-320 |
| Mol wt | 36434 |
| Species reactivity | Human |
| Clonality | Polyclonal |
| Recommended application | WB, IF, ELISA |
| Concentration | 1 mg/ml |
| Full name | MRGX4 Antibody |
| Synonyms | MRGPRX4; MRGX4; SNSR5; SNSR6; Mas-related G-protein coupled receptor member X4; Sensory neuron-specific G-protein coupled receptor 5/6 |

This product is for research use only, not for use in human, therapeutic or diagnostic procedure.

Background

Orphan receptor. Probably involved in the function of nociceptive neurons. May regulate nociceptor function and/or development, including the sensation or modulation of pain. Potently activated by enkephalins.

Recommended Dilution

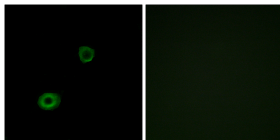
WB: 1: 500 - 1: 2000

IF: 1: 200 - 1: 1000

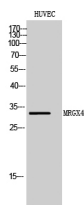
ELISA: 1: 40000

Not yet tested in other applications.

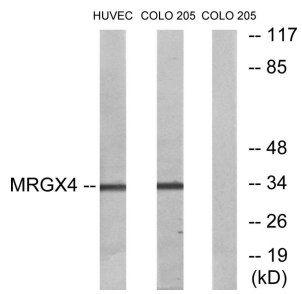
Images



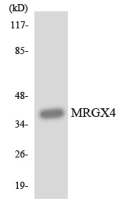
Immunofluorescence analysis of A549 cells, using MRGX4 Antibody. The picture on the right is blocked with the synthesized peptide.



Western Blot analysis of HUVEC cells using MRGX4 Polyclonal Antibody



Western blot analysis of lysates from HUVEC and COLO cells, using MRGX4 Antibody. The lane on the right is blocked with the synthesized peptide.



Western blot analysis of the lysates from HUVEC cells using MRGX4 antibody.

Storage

-20°C for one year

501 Changsheng S Rd, Nanhu Dist, Jiaxing, Zhejiang, China

Tel: 86 21 31007137 | E-mail: save@bt-laboratory.com | www.bt-laboratory.com