

MRP2 Polyclonal Antibody

Description

Product type	Primary Antibody
Code	BT-AP05563
Host	Rabbit
Isotype	IgG
Size	20ul, 50ul, 100ul
Immunogen	The antiserum was produced against synthesized peptide derived from human ABCC2. AA range:991-1040
Mol wt	174191
Species reactivity	Human
Clonality	Polyclonal
Recommended application	WB, ELISA
Concentration	1 mg/ml
Full name	MRP2 Antibody
Synonyms	ABCC2; CMOAT; CMOAT1; CMRP; MRP2; Canalicular multispecific organic anion transporter 1; ATP-binding cassette sub-family C member 2; Canalicular multidrug resistance protein; Multidrug resistance-asso

This product is for research use only, not for use in human, therapeutic or diagnostic procedure.

Background

The ATP binding cassette subfamily C member 2 encoded by ABCC2 is a member of the superfamily of ATP-binding cassette (ABC) transporters. ABC proteins transport various molecules across extra- and intra-cellular membranes. ABC genes are divided into seven distinct subfamilies (ABC1, MDR/TAP, MRP, ALD, OABP, GCN20, White). This protein is a member of the MRP subfamily which is involved in multi-drug resistance. This protein is expressed in the canalicular (apical) part of the hepatocyte and functions in biliary transport. Substrates include anticancer drugs such as vinblastine; therefore, this protein appears to contribute to drug resistance in mammalian cells. Several different mutations in this gene have been observed in patients with Dubin-Johnson syndrome (DJS), an autosomal recessive disorder characterized by conjugated hyperbilirubinemia.

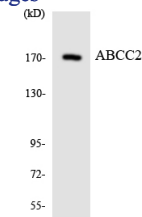
Recommended Dilution

WB: 1: 500 - 1: 2000

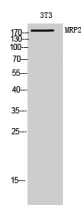
ELISA: 1: 10000

Not yet tested in other applications.

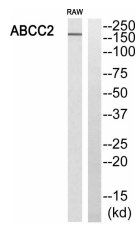
Images



Western blot analysis of the lysates from HeLa cells using ABCC2 antibody.



Western Blot analysis of 3T3 cells using MRP2 Polyclonal Antibody diluted at 1:1000



Western blot analysis of ABCC2 Antibody. The lane on the right is blocked with the ABCC2 peptide.

Storage

-20°C for one year

501 Changsheng S Rd, Nanhu Dist, Jiaxing, Zhejiang, China

Tel: 86 21 31007137 | E-mail: save@bt-laboratory.com | www.bt-laboratory.com