

MRP-L11 Polyclonal Antibody

Description

Product type	Primary Antibody
Code	BT-AP05569
Host	Rabbit
Isotype	IgG
Size	20ul, 50ul, 100ul
Immunogen	The antiserum was produced against synthesized peptide derived from human MRPL11. AA range:21-70
Mol wt	20683
Species reactivity	Human, Monkey
Clonality	Polyclonal
Recommended application	WB, IHC-p, IF, ELISA
Concentration	1 mg/ml
Full name	MRP-L11 Antibody
Synonyms	MRPL11; CGI-113; 39S ribosomal protein L11; mitochondrial; L11mt; MRP-L11

This product is for research use only, not for use in human, therapeutic or diagnostic procedure.

Background

MRPL11 is a nuclear gene encodes a 39S subunit component of the mitochondrial ribosome. Alternative splicing results in multiple transcript variants. Pseudogenes for this gene are found on chromosomes 5 and 12.

Recommended Dilution

WB: 1: 500 - 1: 2000

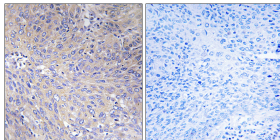
IHC: 1: 100 - 1: 300

IF: 1: 200 - 1: 1000

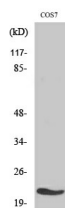
ELISA: 1: 40000

Not yet tested in other applications.

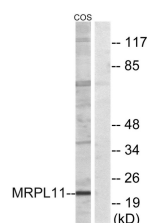
Images



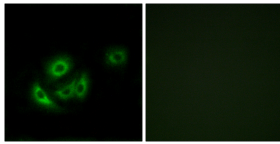
Immunohistochemistry analysis of paraffin-embedded human cervix carcinoma tissue, using MRPL11 Antibody. The picture on the right is blocked with the synthesized peptide.



Western Blot analysis of various cells using MRP-L11 Polyclonal Antibody diluted at 1:500



Western blot analysis of lysates from COS cells, using MRPL11 Antibody. The lane on the right is blocked with the synthesized peptide.



Immunofluorescence analysis of A549 cells, using MRPL11 Antibody. The picture on the right is blocked with the synthesized peptide.

Storage

-20°C for one year

501 Changsheng S Rd, Nanhu Dist, Jiaxing, Zhejiang, China

Tel: 86 21 31007137 | E-mail: save@bt-laboratory.com | www.bt-laboratory.com